

APA044Bo01 100µg

Active Growth Hormone (GH)

Organism Species: *Bos taurus*; Bovine (Cattle)

Instruction manual

FOR RESEARCH USE ONLY

NOT FOR USE IN CLINICAL DIAGNOSTIC PROCEDURES

13th Edition (Revised in Aug, 2023)

[PROPERTIES]

Source: Prokaryotic expression.

Host: *E. coli*

Residues: Ala27~Phe217

Tags: N-terminal His-tag

Purity: >90%

Endotoxin Level: <1.0EU per 1µg (determined by the LAL method).

Buffer Formulation: PBS, pH7.4, containing 0.01% Sarcosyl, 5%Trehalose .

Original Concentration: 200µg/mL

Applications: Activity Assays.

(May be suitable for use in other assays to be determined by the end user.)

Predicted isoelectric point: 7.9

Predicted Molecular Mass: 25.4kDa

Accurate Molecular Mass: 25kDa as determined by SDS-PAGE reducing conditions.

[USAGE]

Reconstitute in 10mM PBS (pH7.4) to a concentration of 0.1-1.0 mg/mL. Do not vortex.

[STORAGE AND STABILITY]

Storage: Avoid repeated freeze/thaw cycles.

Store at 2-8°C for one month.

Aliquot and store at -80°C for 12 months.

Stability Test: The thermal stability is described by the loss rate. The loss rate was determined by accelerated thermal degradation test, that is, incubate the protein at 37°C for 48h, and no obvious degradation and precipitation were observed. The loss rate is less than 5% within the expiration date under appropriate storage condition.

[SEQUENCE]

```
AFPA MSLSGLFANA VLRAQHLHQL
AADTFKEFER TYIEGQRYs IQNTQVAFcf SETIPAPTgK NEAQqKSDLE
LLRISLLLIQ SWLGPLQFLS RVFTNSLVFG TSDRVYEKLK DLEEGILALM
RELEDGTPRA GQILKQTYDK FDTNMRSDDA LLKNYGLLSC FRKDLHKTET
YLRVMKCRRF GEASCAF
```

[ACTIVITY]

Growth Hormone (GH) is a 191-amino acid polypeptide hormone synthesized and secreted by somatotroph cells of the anterior pituitary gland. As a master regulator of somatic development, GH exerts its biological effects primarily through binding to the growth hormone receptor (GHR), thereby activating the JAK2-STAT signaling cascade. This activation stimulates insulin-like growth factor 1 (IGF-1) production in the liver while simultaneously promoting direct tissue growth effects. Besides, Erythropoietin (EPO) has been identified as an interactor of GH, thus a functional binding ELISA assay was conducted to detect the interaction of recombinant bovine GH and recombinant mouse EPO. Briefly, GH was diluted serially in PBS with 0.01% BSA (pH 7.4). Duplicate samples of 100 μ l were then transferred to EPO-coated microtiter wells and incubated for 1h at 37 °C . Wells were washed with PBST and incubated for 1h with anti-GH pAb, then aspirated and washed 3 times. After incubation with HRP labelled secondary antibody for 1h at 37 °C , wells were aspirated and washed 5 times. With the addition of substrate solution, wells were incubated 15-25 minutes at 37 °C . Finally, add 50 μ l stop solution to the wells and read at 450/630nm immediately. The binding activity of recombinant bovine GH and recombinant mouse EPO was shown in Figure 1, the EC50 for this effect is 0.062 μ g/mL.

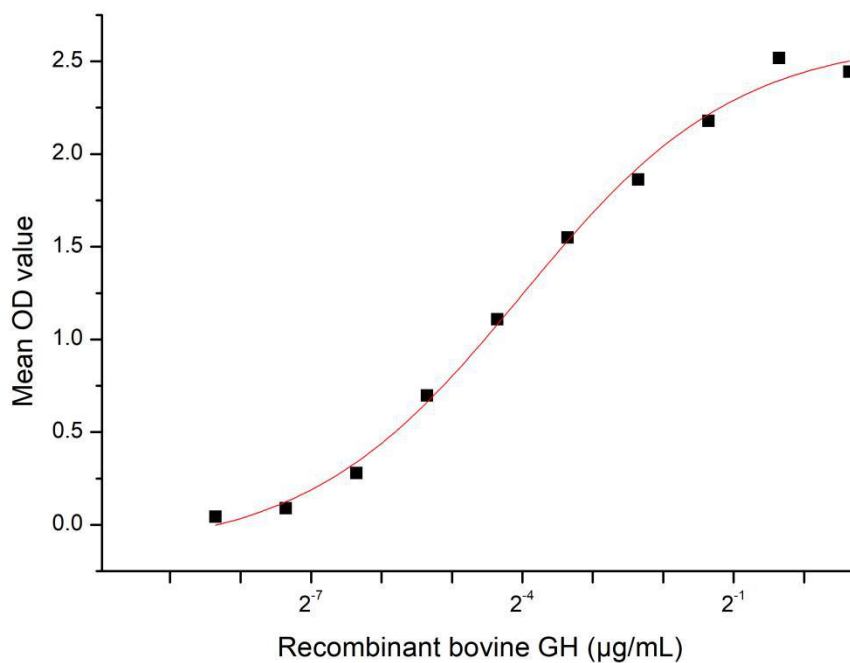


Figure 1. The binding activity of recombinant bovine GH and recombinant mouse EPO

[IDENTIFICATION]

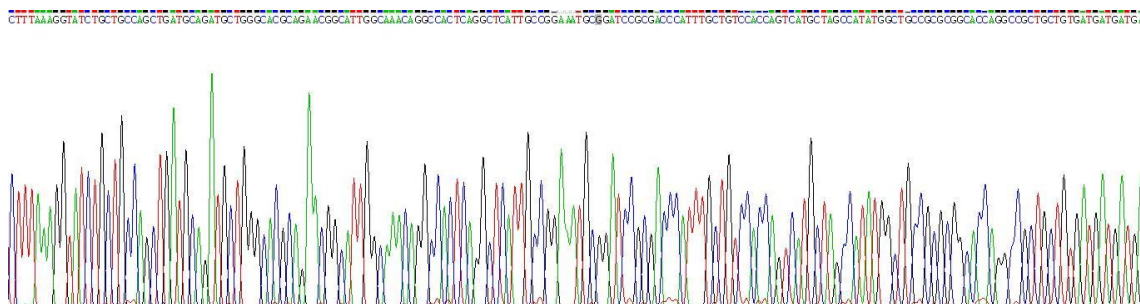


Figure 2. Gene Sequencing (extract)

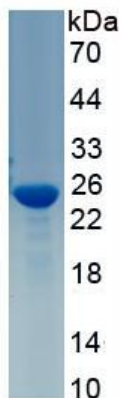


Figure 3. SDS-PAGE

Sample: Active recombinant GH, Cattle

[IMPORTANT NOTE]

The kit is designed for research use only, we will not be responsible for any issue if the kit was used in clinical diagnostic or any other procedures.