



CAB340Hu01

Anti-Actin Beta (ACTb) Polyclonal Antibody

Organism Species: Homo sapiens (Human)

Instruction manual

FOR IN VITRO USE AND RESEARCH USE ONLY
NOT FOR USE IN CLINICAL DIAGNOSTIC PROCEDURES

12th Edition (Revised in Aug, 2016)

[PROPERTIES]

Source: Polyclonal antibody preparation

Host: Rabbit

Purification: Antigen-specific Affinity Chromatography

Traits: Liquid

Concentration: 200µg/mL

UOM: 50µg

Applications: Loading Control of WB.

[IMMUNOGEN]

Immunogen: Recombinant ACTb (Met1~Phe375) expressed in *E.coli*.

Accession No.: RPB340Mi01

[ORGANISM SPECIES MORE]

React with: Human, mouse, rat, cavia, ovine, canine, porcine, equine, gallus, bovine;

Other species have not been detected.

[APPLICATIONS]

Western blotting: 0.5-5ug/ml

Optimal working dilutions must be determined by end user.

[FORMULATION]

Form & Buffer: Supplied as solution form in 0.01M PBS, pH7.4, containing 0.05% Proclin-300, 50% glycerol.

[STORAGE AND STABILITY]

Storage: Avoid repeated freeze/thaw cycles.

Store at 4°C for frequent use.

Aliquot and store at -20°C for 12 months.

Stability Test: The thermal stability is described by the loss rate. The loss rate was determined by accelerated thermal degradation test, that is, incubate the

protein at 37°C for 48h, and no obvious degradation and precipitation were observed. The loss rate is less than 5% within the expiration date under appropriate storage condition.

[IDENTIFICATION]

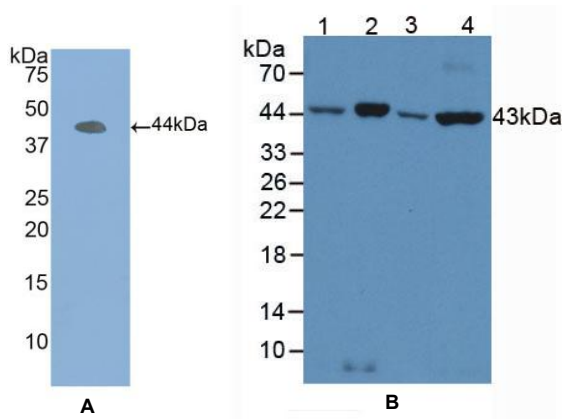


Figure 1. Western Blot

A. Sample: Recombinant ACTb, Human

B. Lane1: Human Liver Tissue

Lane2: Human Lung Tissue

Lane3: Human K562 Cells

Lane4: Mouse Lung Tissue

Primary Ab: 3µg/mL Rabbit Anti-Human ACTb Ab

Second Ab: 1:2000 Dilution of HRP-Linked Guinea pig Anti-Rabbit Ab (Catalog: SAA544Rb59)