

**CAA591Hu01****Anti-Proliferating Cell Nuclear Antigen (PCNA) Polyclonal Antibody****Organism Species: Homo sapiens (Human)*****Instruction manual***

FOR IN VITRO USE AND RESEARCH USE ONLY

NOT FOR USE IN CLINICAL DIAGNOSTIC PROCEDURES

11th Edition (Revised in May, 2016)

**[ PROPERTIES ]****Source:** Polyclonal antibody preparation**Host:** Rabbit**Purification:** Antigen-specific Affinity Chromatography**Traits:** Liquid**Concentration:** 200µg/mL**UOM:** 100µg**Applications:** WB**[ IMMUNOGEN ]****Immunogen:** RPA591Hu01-Recombinant Proliferating Cell Nuclear Antigen (PCNA)**[ ORGANISM SPECIES MORE ]****React with:** Human, mouse, rat, canine, simian, porcine, rabbit;

Other species have not been detected.

**[ APPLICATIONS ]**

Western blotting: 0.5-2ug/ml

Optimal working dilutions must be determined by end user.

**[ FORMULATION ]****Form & Buffer:** Supplied as solution form in PBS, pH7.4, containing 0.02% NaN<sub>3</sub>, 50% glycerol.

## [ QUALITY CONTROL ]

**Content:** The quality control contains recombinant PCNA disposed in loading buffer.

**Usage:** 10uL per well when 3,3'-Diaminobenzidine(DAB) as the substrate.  
5uL per well when used in enhanced chemilumescence (ECL).

**Note:** The quality control is specifically manufactured as the positive control. Not used for other purposes.

**Loading Buffer:** 100mM Tris(pH6.8), 1% SDS, 150mM NaCl, 50% glycerol, 0.02% BPB, 50mM DTT and 0.02% NaN<sub>3</sub>.

## [ STORAGE AND STABILITY ]

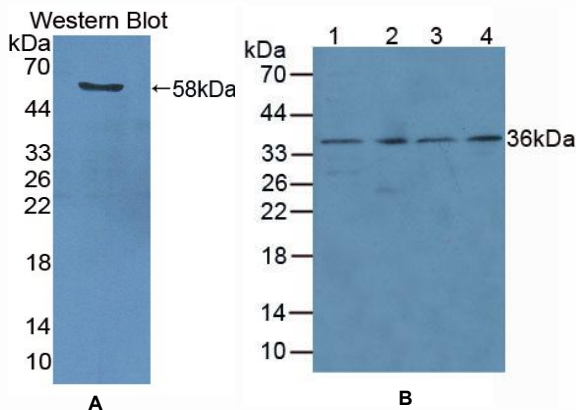
**Storage:** Avoid repeated freeze/thaw cycles.

Store at 4°C for frequent use.

Aliquot and store at -20°C for 12 months.

**Stability Test:** The thermal stability is described by the loss rate. The loss rate was determined by accelerated thermal degradation test, that is, incubate the protein at 37°C for 48h, and no obvious degradation and precipitation were observed. The loss rate is less than 5% within the expiration date under appropriate storage condition.

## [ IDENTIFICATION ]



**Figure 1. Western Blot**

**A. Sample: Recombinant PCNA, Human**

**B. Lane1: Human Liver Tissue**

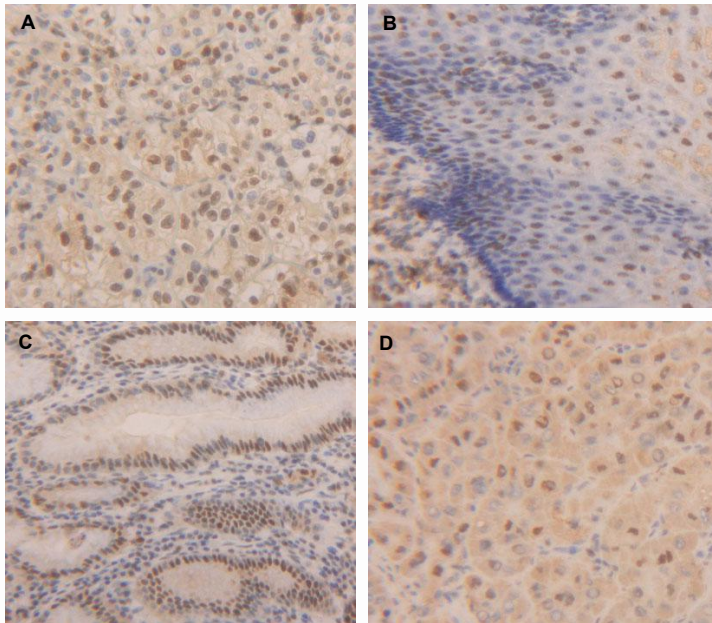
**Lane2: Mouse Heart Tissue**

**Lane3: Mouse Spleen Tissue**

**Lane4: Human Plasm**

**Primary Ab: 3µg/mL Rabbit Anti-Human PCNA Ab**

**Second Ab: 1:2000 Dilution of HRP-Linked Guinea pig Anti-Rabbit Ab (Catalog: SAA544Rb59)**



**Figure 2. DAB staining on IHC-P**

**Samples:**

- A. Human Kidney Cancer Tissue**
- B. Human esophagus Cancer Tissue**
- C. Human Stomach Tissue**
- D. Human Liver Cancer Tissue**