

TAX164Ge22
Anti-S15 Oligopeptide (S) Tag Monoclonal Antibody
Instruction manual

FOR IN VITRO USE AND RESEARCH USE ONLY
NOT FOR USE IN CLINICAL DIAGNOSTIC PROCEDURES

12th Edition (Revised in Aug, 2016)



[PROPERTIES]

Source: Monoclonal antibody preparation

Host: Mouse

Antibody isotype: IgG

Purification: Protein A/G Affinity Chromatography.

Clone number: C6

Traits: Liquid

Concentration: 500µg/mL

UOM: 200µg

Applications: WB; ICC/IF; Dot Blot; ELISA; IP; EMSA; Purification.

[IMMUNOGEN]

Immunogen: Synthetic Peptide, S conjugated to OVA.

Accession No.: CPX164Ge21

[APPLICATIONS]

Western blotting: 0.5-5ug/ml

Immunocytochemistry in formalin fixed cells/Immunofluorescence: 5-30ug/ml

Enzyme-linked Immunosorbent Assay: 0.05-2ug/ml

Optimal working dilutions must be determined by end user.

[FORMULATION]

Form & Buffer: Supplied as solution form in 0.01M PBS, pH7.4, containing 0.05% Proclin-300, 50% glycerol.

[STORAGE AND STABILITY]

Storage: Avoid repeated freeze/thaw cycles.

Store at 4°C for frequent use.

Aliquot and store at -20°C for 12 months.

Stability Test: The thermal stability is described by the loss rate. The loss rate was determined by accelerated thermal degradation test, that is, incubate the protein at 37°C for 48h, and no obvious degradation and precipitation were

observed. The loss rate is less than 5% within the expiration date under appropriate storage condition.

[**IDENTIFICATION**]

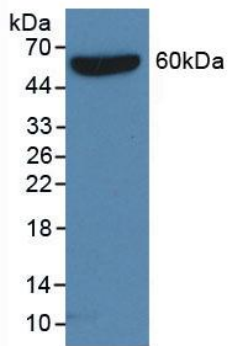


Figure 1. Western Blot

**Sample: Recombinant Protein RPC830Hu02 with
S-tag**