

**PAE826Hu01**  
**Polyclonal Antibody**  
**To Aldehyde Dehydrogenase 1 Family, Member A3 (ALDH1A3)**  
**Organism Species: Homo sapiens (Human)**  
*Instruction manual*

FOR IN VITRO USE AND RESEARCH USE ONLY  
NOT FOR USE IN CLINICAL DIAGNOSTIC PROCEDURES

---

---

9th Edition (Revised in Jul, 2013)

### **[ PRODUCT INFORMATION ]**

**Immunogen:** ALDH1A3, Human

**Clonality:** Polyclonal

**Host:** Rabbit

**Immunoglobulin Type:** IgG

**Purification:** Affinity Chromatography.

**Applications:** WB, ICC, IHC-P, IHC-F, ELISA

**Concentration:** 200µg/mL

**UOM:** 100µg

### **[ IMMUNOGEN INFORMATION ]**

**Immunogen:** Recombinant ALDH1A3 (Arg332~Asp509) expressed in *E.coli*.

**Accession No.:** RPE826Hu01

**Sequence:** The target protein is fused with N-terminal His-Tag and its sequence is listed below.

MGHHHHHHHSGSEF-RRSVEYAKK RPVGDPFDVK TEQGPQIDQK QFDKILELIE  
SGKKEGAKLE CGGSAMEDKG LFIKPTVFSE VTDNMRIAKE EIFGPVQPIL KFKSIEEVIK  
RANSTDYGLT AAVFTKNLDK ALKLASALES GTVWINCYNA LYAQAPFGGF KMSGNGRELG  
EYALAEYTEV KTVTIKLGD

### **[ ANTIBODY SPECIFICITY ]**

The antibody is a rabbit polyclonal antibody raised against ALDH1A3. It has been selected for its ability to recognize ALDH1A3 in immunohistochemical staining and western blotting.

### **[ APPLICATIONS ]**

Western blotting: 1:100-400

Immunocytochemistry in formalin fixed cells: 1:100-500

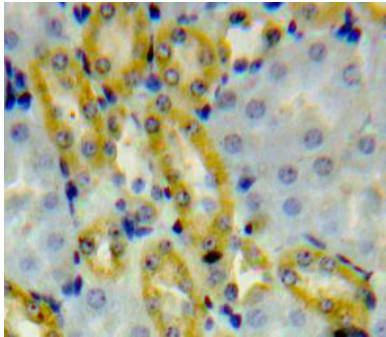
Immunohistochemistry in formalin fixed frozen section: 1:100-500

Immunohistochemistry in paraffin section: 1:50-200

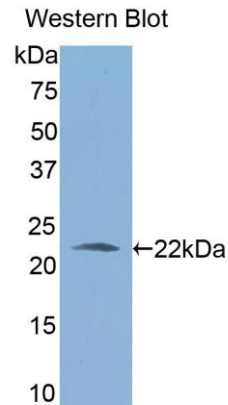
Enzyme-linked Immunosorbent Assay: 1:100-200

Optimal working dilutions must be determined by end user.

## [ IMAGES ]



Used in DAB staining on formalin fixed  
paraffin- embedded Kidney tissue



Used in Western Blot ,Sample:  
Recombinant ALDH1A3,Human

## [ CONTENTS ]

**Form & Buffer:** Supplied as solution form in PBS, pH7.4, containing 0.02% NaN<sub>3</sub>, 50% glycerol.

## [ QUALITY CONTROL ]

**Content:** The quality control contains recombinant ALDH1A3 (Arg332~Asp509) disposed in loading buffer.

**Usage:** 10uL per well when 3,3'-Diaminobenzidine(DAB) as the substrate.  
5uL per well when used in enhanced chemiluminescent (ECL).

**Note:** The quality control is specifically manufactured as the positive control. Not used for other purposes.

**Loading Buffer:** 100mM Tris(pH8.8), 2% SDS, 200mM NaCl, 50% glycerol, BPB 0.01%, NaN<sub>3</sub> 0.02%.

## [ STORAGE ]

Store at 4°C for frequent use. Stored at -20°C to -80°C in a manual defrost freezer for one year without detectable loss of activity. Avoid repeated freeze-thaw cycles.