

PAA861Mu01

Polyclonal Antibody to Complement Component 3 (C3)

Organism Species: *Mus musculus* (Mouse)

Instruction manual

FOR IN VITRO USE AND RESEARCH USE ONLY

NOT FOR USE IN CLINICAL DIAGNOSTIC PROCEDURES

9th Edition (Revised in Jul, 2013)

[PRODUCT INFORMATION]

Immunogen: C3, Mouse

Clonality: Polyclonal

Host: Rabbit

Immunoglobulin Type: IgG

Purification: Affinity Chromatography.

Applications: WB, ICC, IHC-P, IHC-F, ELISA

Concentration: 200µg/mL

UOM: 100µg

[IMMUNOGEN INFORMATION]

Immunogen: Recombinant C3 (Ala965~Arg1303) expressed in *E. coli*.

Accession No.: RPA861Mu01

Sequence: The target protein is fused with two N-terminal Tags, His-tag and T7-tag and its sequence is listed below.

MGSSHHHHHH SSGLVPRGSH MASMTGGQQM GRGSEF- ADLSDQ VPDTDSETRI
ILQGSPVVQM AEDAVDGERL KHLIVTPAGC GEQNMIGMTP TVIAVHYLDQ TEQWEKFGIE
KRQEALELIK KGYTQQLAFK QPSSAYA AFN NRPPSTWLTA YVVKVFLSLAA NLIAIDSHVL
CGAVKWLILE KQKPDGVFQE DGPVIHQEMI GGFRNAKEAD VSLTAFVLIA LQEARDICEG
QVNSLPGSIN KAGEYIEASY MNLQRPYTVA IAGYALALMN KLEEPLYGKF LNTAKDRNRW
EEDPQQLYNV EATSYALLAL LLLKDFDSVP PVVRWLNEQR YYGGGYGSTQ ATFMVFQALA
QYQTDVDPHK DLNMDVSFHL PSR

[ANTIBODY SPECIFICITY]

The antibody is a rabbit polyclonal antibody raised against C3. It has been selected for its ability to recognize C3 in immunohistochemical staining and western blotting.

[APPLICATIONS]

Western blotting: 1:50-400

Immunocytochemistry in formalin fixed cells: 1:50-500

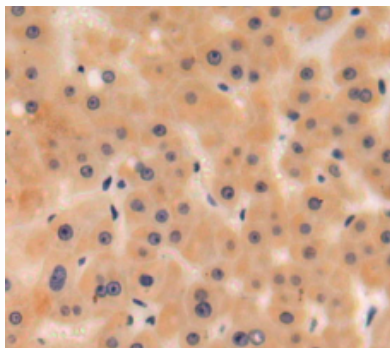
Immunohistochemistry in formalin fixed frozen section: 1:50-500

Immunohistochemistry in paraffin section: 1:10-100

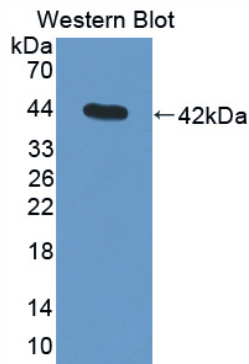
Enzyme-linked Immunosorbent Assay: 1:100-200

Optimal working dilutions must be determined by end user.

[**IMAGES**]



Used in DAB staining on formalin fixed
paraffin-embedded liver tissue



Used in Western Blot, Sample:
Recombinant C3, Mouse

[**CONTENTS**]

Form & Buffer: Supplied as solution form in PBS, pH7.4, containing 0.02% NaN_3 , 50% glycerol.

[**QUALITY CONTROL**]

Content: The quality control contains recombinant C3 (Ala965~Arg1303) disposed in loading buffer.

Usage: 10uL per well when 3,3'-Diaminobenzidine(DAB) as the substrate.
5uL per well when used in enhanced chemiluminescent (ECL).

Note: The quality control is specifically manufactured as the positive control. Not used for other purposes.

Loading Buffer: 100mM Tris(pH8.8), 2% SDS, 200mM NaCl, 50% glycerol, BPB 0.01%, NaN_3 0.02%.

[**STORAGE**]

Store at 4°C for frequent use. Stored at -20°C to -80°C in a manual defrost freezer for one year without detectable loss of activity. Avoid repeated freeze-thaw cycles.