

PAE536Hu01

Polyclonal Antibody to Endothelial Cell Adhesion Molecule (ESAM)**Organism Species: Homo sapiens (Human)****Instruction manual**

FOR IN VITRO USE AND RESEARCH USE ONLY

NOT FOR USE IN CLINICAL DIAGNOSTIC PROCEDURES

9th Edition (Revised in Jul, 2013)

[PRODUCT INFORMATION]**Immunogen:** ESAM, Human**Clonality:** Polyclonal**Host:** Rabbit**Immunoglobulin Type:** IgG**Purification:** Affinity Chromatography.**Applications:** WB, ICC, IHC-P, IHC-F, ELISA**Concentration:** 200µg/mL**UOM:** 100µg**[IMMUNOGEN INFORMATION]****Immunogen:** Recombinant ESAM (Leu31~Val390) expressed in *E.coli*.**Accession No.:** RPE536Hu01**Sequence:** The target protein is fused with N-terminal His-Tag and its sequence is listed below.

MGHHHHHHSQSEF-LQLHLPANRL QAVEGGEVVL PAWYTLHGEV SSSQPWEVFP
VMWFFKQKEK EDQVLSYING VTTSKPGVSL VYSMPSRNLS LRLEGLQEKD SGPYSCSVNV
QDKQGKSRGH SIKTLELNVL VPPAPPSCRL QGVPHVGANV TLSCQSPRSK
PAVQYQWDRQ LPSFQTFAP ALDVIRGSLT LTNLSSSMAG VYVCKAHNEV GTAQCNTLE
VSTGPGAADV AGAVVGLTVG LGLLAGLVLL YHRRGKALEE PANDIKEDAI APRTLWPWPKS
SDTISKNGTL SSVTSARALR PPHGPPRPGA LTPTPSLSSQ ALPSRLPTT DGAHPQPISP
IPGGVSSSGL SRMGAVPVMV PAQSQAGSLV

[ANTIBODY SPECIFICITY]

The antibody is a rabbit polyclonal antibody raised against ESAM. It has been selected for its ability to recognize ESAM in immunohistochemical staining and western blotting.

[APPLICATIONS]

Western blotting: 1:100-400

Immunocytochemistry in formalin fixed cells: 1:100-500

Immunohistochemistry in formalin fixed frozen section: 1:100-500

Immunohistochemistry in paraffin section: 1:50-200

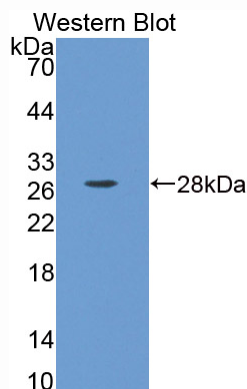
Enzyme-linked Immunosorbent Assay: 1:100-200

Optimal working dilutions must be determined by end user.

[**IMAGES**]



Used in DAB staining on formalin fixed
paraffin-embedded kidney tissue



Used in Western Blot, Sample:
Recombinant ESAM, Human

[**CONTENTS**]

Form & Buffer: Supplied as solution form in PBS, pH7.4, containing 0.02% NaN_3 , 50% glycerol.

[**QUALITY CONTROL**]

Content: The quality control contains recombinant ESAM (Leu31~Val390) disposed in loading buffer.

Usage: 10uL per well when 3,3'-Diaminobenzidine(DAB) as the substrate.
5uL per well when used in enhanced chemiluminescent (ECL).

Note: The quality control is specifically manufactured as the positive control. Not used for other purposes.

Loading Buffer: 100mM Tris(pH8.8), 2% SDS, 200mM NaCl, 50% glycerol, BPB 0.01%, NaN_3 0.02%.

[**STORAGE**]

Store at 4°C for frequent use. Stored at -20°C to -80°C in a manual defrost freezer for one year without detectable loss of activity. Avoid repeated freeze-thaw cycles.