

PAC033Hu01

**Polyclonal Antibody to Heat Shock Protein Beta 8 (HSPb8)****Organism Species: Homo sapiens (Human)*****Instruction manual***

FOR IN VITRO USE AND RESEARCH USE ONLY

NOT FOR USE IN CLINICAL DIAGNOSTIC PROCEDURES

9th Edition (Revised in Jul, 2013)

**[ PRODUCT INFORMATION ]****Immunogen:** HSPb8, Human**Clonality:** Polyclonal**Host:** Rabbit**Immunoglobulin Type:** IgG**Purification:** Affinity Chromatography.**Applications:** WB, ICC, IHC-P, IHC-F, ELISA**Concentration:** 200µg/mL**UOM:** 100µg**[ IMMUNOGEN INFORMATION ]****Immunogen:** Recombinant HSPb8 (Met1~Thr196) expressed in *E.coli*.**Accession No.:** RPC033Hu01**Sequence:** The target protein is fused with N-terminal His-Tag and its sequence is listed below.

MGHHHHHHSQSEF-MADGQMPFSC HYP SRLRRDP FRDSPLSSRL LDDGFGMDPF  
PDDLTASWPD WALPRLSSAW PGTLRSGMVP RGPTATARFG VPAEGRTPPP  
FPGEPWKVCV NVHSFKPEEL MVKTKDGYVE VSGKHEEKQQ EGGIVSKNFT KKIQLPAEVD  
PVTVFASLSP EGLLIIEAPQ VPPYSTFGES SFNNELPQDS QEVTCT

**[ ANTIBODY SPECIFICITY ]**

The antibody is a rabbit polyclonal antibody raised against HSPb8. It has been selected for its ability to recognize HSPb8 in immunohistochemical staining and western blotting.

**[ APPLICATIONS ]**

Western blotting: 1:100-400

Immunocytochemistry in formalin fixed cells: 1:100-500

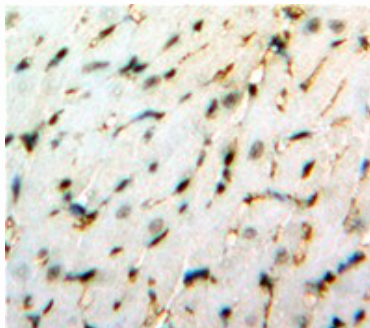
Immunohistochemistry in formalin fixed frozen section: 1:100-500

Immunohistochemistry in paraffin section: 1:50-200

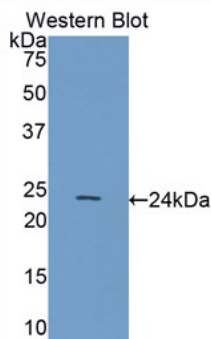
Enzyme-linked Immunosorbent Assay: 1:100-200

Optimal working dilutions must be determined by end user.

## [ **IMAGES** ]



Used in DAB staining on formalin fixed  
paraffin- embedded Heart tissue



Used in Western Blot ,Sample:  
Recombinant HSPb8,Human

## [ **CONTENTS** ]

**Form & Buffer:** Supplied as solution form in PBS, pH7.4, containing 0.02%  $\text{NaN}_3$ , 50% glycerol.

## [ **QUALITY CONTROL** ]

**Content:** The quality control contains recombinant HSPb8 (Met1~Thr196) disposed in loading buffer.

**Usage:** 10uL per well when 3,3'-Diaminobenzidine(DAB) as the substrate.  
5uL per well when used in enhanced chemiluminescent (ECL).

**Note:** The quality control is specifically manufactured as the positive control. Not used for other purposes.

**Loading Buffer:** 100mM Tris(pH8.8), 2% SDS, 200mM NaCl, 50% glycerol, BPB 0.01%,  $\text{NaN}_3$  0.02%.

## [ **STORAGE** ]

Store at 4°C for frequent use. Stored at -20°C to -80°C in a manual defrost freezer for one year without detectable loss of activity. Avoid repeated freeze-thaw cycles.