

PAB822Hu01**Polyclonal Antibody to Keratin 17 (KRT17)****Organism Species: Homo sapiens (Human)*****Instruction manual***

FOR IN VITRO USE AND RESEARCH USE ONLY

NOT FOR USE IN CLINICAL DIAGNOSTIC PROCEDURES

9th Edition (Revised in Jul, 2013)

[PRODUCT INFORMATION]**Immunogen:** KRT17, Human**Clonality:** Polyclonal**Host:** Rabbit**Immunoglobulin Type:** IgG**Purification:** Affinity Chromatography.**Applications:** WB, ICC, IHC-P, IHC-F, ELISA**Concentration:** 200µg/mL**UOM:** 50µg**[IMMUNOGEN INFORMATION]****Immunogen:** Recombinant KRT17 (Ile252~Ala393) expressed in *E.coli*.**Accession No.:** RPB822Hu01**Sequence:** The target protein is fused with two N-terminal Tags, His-tag and S-tag and its sequence is listed below.

MHHHHHSSG LVPRGSGMKE TAAKFERQH MDSPDLGTDD DDKAMADIGS
EF-ILNEMRDQY EKMAEKNRCD AEDWFFSKTE ELNREVATNS ELVQSGKSEI
SELRRTMQAL EIELSQLSM KASLEGNLAE TENRYCVQLS QIQGLIGSVE EQLAQLRCM
EQNQEYKIL LDVKTRLEQE IATYRRLLLEG EDA

[ANTIBODY SPECIFICITY]

The antibody is a rabbit polyclonal antibody raised against KRT17. It has been selected for its ability to recognize KRT17 in immunohistochemical staining and western blotting.

[APPLICATIONS]

Western blotting: 1:50-400

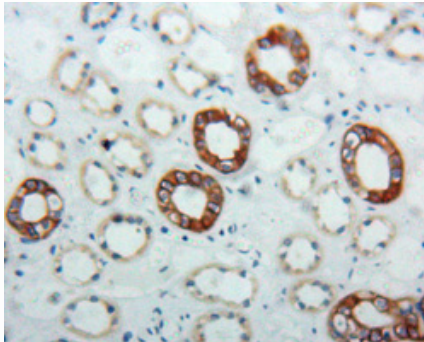
Immunocytochemistry in formalin fixed cells: 1:50-500

Immunohistochemistry in formalin fixed frozen section: 1:50-500

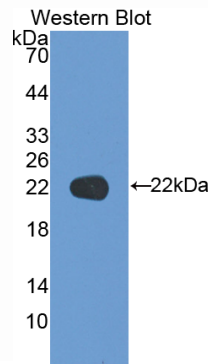
Immunohistochemistry in paraffin section: 1:10-100

Enzyme-linked Immunosorbent Assay: 1:100-200
Optimal working dilutions must be determined by end user.

[IMAGES]



Used in DAB staining on formalin fixed
paraffin- embedded kidney tissue



Used in Western Blot ,Sample:
Recombinant KRT17,Human

[CONTENTS]

Form & Buffer: Supplied as solution form in PBS, pH7.4, containing 0.02% NaN₃, 50% glycerol.

[QUALITY CONTROL]

Content: The quality control contains recombinant KRT17 (Ile252~Ala393) disposed in loading buffer.

Usage: 10uL per well when 3,3'-Diaminobenzidine(DAB) as the substrate.
5uL per well when used in enhanced chemiluminescent (ECL).

Note: The quality control is specifically manufactured as the positive control. Not used for other purposes.

Loading Buffer: 100mM Tris(pH8.8), 2% SDS, 200mM NaCl, 50% glycerol, BPB 0.01%, NaN₃ 0.02%.

[STORAGE]

Store at 4°C for frequent use. Stored at -20°C to -80°C in a manual defrost freezer for one year without detectable loss of activity. Avoid repeated freeze-thaw cycles.