

PAA780Po01

Polyclonal Antibody to Lactoferrin (LTF)
Organism Species: *Sus scrofa*; Porcine (Pig)
Instruction manual

FOR IN VITRO USE AND RESEARCH USE ONLY
NOT FOR USE IN CLINICAL DIAGNOSTIC PROCEDURES

9th Edition (Revised in Jul, 2013)

[PRODUCT INFORMATION]

Immunogen: LTF, Porcine

Clonality: Polyclonal

Host: Rabbit

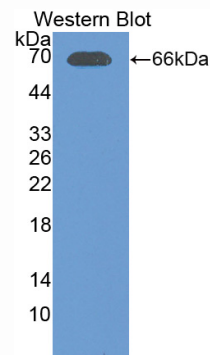
Immunoglobulin Type: IgG

Purification: Affinity Chromatography.

Applications: WB, ICC, IHC-P, IHC-F, ELISA

Concentration: 200µg/mL

UOM: 100µg



Sample: Recombinant LTF, Porcine

[IMMUNOGEN INFORMATION]

Immunogen: Recombinant LTF (Val25~Glu348) expressed in *E. coli*.

Accession No.: RPA780Po01

Sequence: The target protein is fused with two N-terminal Tags, His-tag and GST-tag and its sequence is listed below.

MSPILGYWKI KGLVQPTRL L LEYLEEKYEE HLYERDEGDK WRNKKFELGL EFPNLPYYID
GDVKLTQSMA IIRYIADKHN MLGGCPKERA EISMLEGAVL DIRYGVSRIA YSKDFETLKV
DFLSKLP EML KMFEDRLCHK TYLNGDHVTH PDFMLYDALD VVLYMDPMCL DAFPKLVCFK
KRIEAIQID KYLKSSKYIA WPLQG WQATF GGGDHPKSD GSTSGSGHHH HHSAGLVPR
GSTAIGMKET AAKFERQHM DSPDLGTLEV LFQGPLGS-VRWCVI STAEYSKCRQ
WQSKIRRTNP MFCIRRASPT DCIRAI AAKR ADAVTLDGGL VFEADQYKLR PVA AEIYGTE
ENPQTYYYAV AVVKKGFNFQ LNQLQGRKSC HTGLGRSAGW NIPIGLLRRF LDWAGPPEPL
QKAVAKFFSQ SCVPCADGNA YPNLCQLCIG KGKDKCACSS QEPYFGYSGA FNCLHKIGID
VAFVKESTVF ENLPQKADRD KYELLCPDNT RKPVEAFREC HLARVPSHAV VARSVNGKEN

SIWELLYQSQ KKFGKSNPQE FQLFGSPGQQ KDLLFRDATI GFLKIPSKID SKLYLGLPYL
TAIQLRE

[ANTIBODY SPECIFICITY]

The antibody is a rabbit polyclonal antibody raised against LTF. It has been selected for its ability to recognize LTF in immunohistochemical staining and western blotting.

[APPLICATIONS]

Western blotting: 1:100-400

Immunocytochemistry in formalin fixed cells: 1:100-500

Immunohistochemistry in formalin fixed frozen section: 1:100-500

Immunohistochemistry in paraffin section: 1:50-200

Enzyme-linked Immunosorbent Assay: 1:100-200

Optimal working dilutions must be determined by end user.

[CONTENTS]

Form & Buffer: Supplied as solution form in PBS, pH7.4, containing 0.02% NaN_3 , 50% glycerol.

[QUALITY CONTROL]

Content: The quality control contains recombinant LTF (Val25~Glu348) disposed in loading buffer.

Usage: 10uL per well when 3,3'-Diaminobenzidine(DAB) as the substrate.
5uL per well when used in enhanced chemiluminescent (ECL).

Note: The quality control is specifically manufactured as the positive control. Not used for other purposes.

Loading Buffer: 100mM Tris(pH8.8), 2% SDS, 200mM NaCl, 50% glycerol, BPB 0.01%, NaN_3 0.02%.

[STORAGE]

Store at 4°C for frequent use. Stored at -20°C to -80°C in a manual defrost freezer for one year without detectable loss of activity. Avoid repeated freeze-thaw cycles.