

PAF422Hu71

Biotin-Linked Antibody to Fibulin 3 (FBLN3)

Organism Species: Homo sapiens (Human)

Instruction manual

FOR IN VITRO USE AND RESEARCH USE ONLY
NOT FOR USE IN CLINICAL DIAGNOSTIC PROCEDURES

9th Edition (Revised in Jul, 2013)

[**PRODUCT INFORMATION**]

Immunogen: FBLN3, Human

Clonality: Polyclonal

Conjugation: Biotin

Host: Rabbit

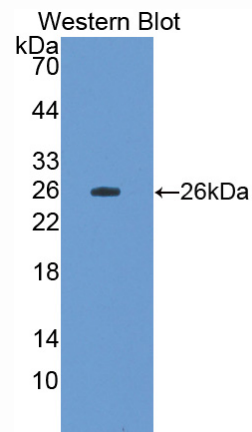
Immunoglobulin Type: IgG

Purification: Affinity Chromatography.

Applications: WB, ICC, IHC-P, IHC-F, ELISA

Concentration: 100µg/mL

UOM: 100µg



Sample: Recombinant FBLN3, Human

[**IMMUNOGEN INFORMATION**]

Immunogen: Recombinant FBLN3 (Cys258~Phe493) expressed in *E.coli*.

Accession No.: RPF422Hu01

Sequence: The target protein is fused with N-terminal His-Tag and its sequence is listed below.

MGHHHHHSGSEF-CDA SNQCAQQCYN ILGSFICQCN QGYELSSDRL NCEDIDECRT
SSYLCQYQCV NEPGKFSCMC PQGYQVRSR TCQDINECET TNECREDEMC
WNYHGGFRCY PRNPCDPYI LTPENRCVCP VSNAMCRELP QSIVYKYMSI RSDRSVPSDI
FQIQATTIYA NTINTFRIKS GNENGEFYLR QTSPVSAMLV LVKLSLGPRES HIVDLEMLTV
SSIGTFRTSS VLRLTIIVGP FSF

[ANTIBODY SPECIFICITY]

The antibody is a rabbit polyclonal antibody raised against FBLN3. It has been selected for its ability to recognize FBLN3 in immunohistochemical staining and western blotting.

[APPLICATIONS]

Western blotting: 1:100-400

Immunocytochemistry in formalin fixed cells: 1:100-500

Immunohistochemistry in formalin fixed frozen section: 1:100-500

Immunohistochemistry in paraffin section: 1:50-200

Enzyme-linked Immunosorbent Assay: 1:100-200

Optimal working dilutions must be determined by end user.

[CONTENTS]

Form & Buffer: Supplied as solution form in PBS, pH7.4, containing 0.02% NaN₃, 50% glycerol.

[STORAGE]

Store at 4°C for frequent use. Stored at -20°C to -80°C in a manual defrost freezer for one year without detectable loss of activity. Avoid repeated freeze-thaw cycles.