

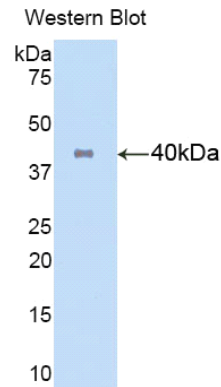
**A90516Hu71**  
**Biotin-linked Antibody to Keratin 16 (KRT16)**  
**Organism: Homo sapiens (Human)**  
***Instruction manual***

FOR IN VITRO USE AND RESEARCH USE ONLY  
NOT FOR USE IN CLINICAL DIAGNOSTIC PROCEDURES

6th Edition (Revised in March, 2013)

**[ PRODUCT INFORMATION ]**

**Immunogen:** KRT16, Human  
**Conjugation:** Biotin  
**Clonality:** Polyclonal  
**Host:** Rabbit  
**Immunoglobulin Type:** IgG  
**Purification:** Affinity Chromatography.  
**Applications:** WB, ICC, IHC-P, IHC-F  
**Concentration:** 200µg/mL  
**UOM:** 50µg



*Sample: Recombinant KRT16, Human*




**[ IMMUNOGEN INFORMATION ]**

**Immunogen:** Recombinant KRT16 (Glu117~Arg419) expressed in *E. coli*.

**USCN Accession No.:** P90516Hu01

**Sequence:** The target protein is fused with two N-terminal Tags, His-tag and S-tag and its sequence is listed below.

MHHHHHHSSGLVPRGSGMKETAALKFERQHMDSPDLGTDKDDKAMADIGSEF-EKVT  
MQNLNDRLAS YLDKVRALAE ANADLEVKIR DWYQRQRPSE IKDYSPYFKT IEDLRNKIIA  
ATIENAQPIL QIDNARLAAD DFRTKYEHEL ALRQTVEADV NGLRRVLDL TLARTDLEMQ  
IEGLKEELAY LRKNHEEEML ALRGQTGGDV NVEMDAAPGV DLSRILNEMR DQYEQMAEKN  
RRDAETWFLS KTEELNKEVA SSELVQSSR SEVTELRRLV QGLEIELQSQ LSMKASLENS  
LEETKGRYCM QLSQIQGLIG SVEEQLAQLR CEMEQQSQEY QILLDVKTRL EQEIATYRR

*Unique product Superb quality Client favorite Nicest service*  ISO9001:2008 ;  ISO13485:2003 ; 

## [ ANTIBODY SPECIFICITY ]

The antibody is a rabbit polyclonal antibody raised against KRT16. It has been selected for its ability to recognize KRT16 in immunohistochemical staining and western blotting.

## [ APPLICATIONS ]

Western blotting: 1:100-400

Immunocytochemistry in formalin fixed cells: 1:100-500

Immunohistochemistry in formalin fixed frozen section: 1:100-500

Immunohistochemistry in paraffin section: 1:50-200

Optimal working dilutions must be determined by end user.

## [ CONTENTS ]

**Form & Buffer:** Supplied as solution form in PBS, pH7.4, containing 0.02% NaN<sub>3</sub>, 50% glycerol.

## [ QUALITY CONTROL ]

**Content:** The quality control contains recombinant KRT16 (Gln117~Arg419) disposed in loading buffer.

**Usage:** 10uL per well when 3,3'-Diaminobenzidine(DAB) as the substrate.  
5uL per well when used in enhanced chemiluminescent (ECL).

**Note:** The quality control is specifically manufactured as the positive control. Not used for other purposes.

**Loading Buffer:** 100mM Tris(pH8.8), 2% SDS, 200mM NaCl, 50% glycerol, BPB 0.01%, NaN<sub>3</sub> 0.02%.

## [ STORAGE ]

Store at 4°C for frequent use. Stored at -20°C to -80°C in a manual defrost freezer for one year without detectable loss of activity. Avoid repeated freeze-thaw cycles.