

**rP91915Hu01 100µg**  
**Bruton'S Tyrosine Kinase (Btk)**  
**Organism: Homo sapiens (Human)**  
***Instruction manual***

FOR IN VITRO USE AND RESEARCH USE ONLY  
NOT FOR USE IN CLINICAL DIAGNOSTIC PROCEDURES

7th Edition (Revised in May, 2013)

## **[ PROPERTIES ]**

**Residues:** Glu396~Ser659 (Accession # Q06187),  
with two N-terminal Tags, His-tag and GST-tag.

**Host:** *E. coli*

**Subcellular Location:** Cytoplasm. Cell  
membrane; Peripheral membrane protein.  
Nucleus.

**Purity:** >95%

**Endotoxin Level:** <1.0EU per 1µg  
(determined by the LAL method).

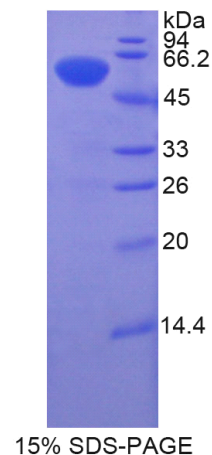
**Formulation:** Supplied as lyophilized form in PBS,  
pH7.4, containing 5% sucrose, 0.01% sarcosyl.

**Predicted isoelectric point:** 6.0

**Predicted Molecular Mass:** 57.9kDa

**Applications:** SDS-PAGE; WB; ELISA; IP.

(May be suitable for use in other assays to be determined by the end user.)



## **[ USAGE ]**

Reconstitute in sterile PBS, pH7.2-pH7.4.

*Unique product Superb quality Client favorite Nicest service*  ISO9001:2008;  ISO13485:2003; 

## [ STORAGE AND STABILITY ]

### **Storage: Avoid repeated freeze/thaw cycles.**

Store at 2-8°C for one month.

Aliquot and store at -80°C for 12 months.

**Stability Test:** The thermal stability is described by the loss rate of the target protein. The loss rate was determined by accelerated thermal degradation test, that is, incubate the protein at 37°C for 48h, and no obvious degradation and precipitation were observed. (Referring from China Biological Products Standard, which was calculated by the Arrhenius equation.) The loss of this protein is less than 5% within the expiration date under appropriate storage condition.

## [ SEQUENCES ]

The target protein is fused with two N-terminal Tags, His-tag and GST-tag, its sequence is listed below.

MRNKKFELGL EFPNLPYYID GDVKLTQSMA IIRYIADKHN MLGGCPKERA EISMLEGAVL  
DIRYGVSRIA YSKDFETLKV DFLSKLPEML KMFEDRLCHK TYLNGDHVTH PDFMLYDALD  
VVLYMDPMCL DAFPKLVCVK KRIEAIPIQID KYLKSSKYIA WPLQGWQATF GGGDHPPKSD  
GSTSGSGHHH HHSAGLVPR GSTAIGMKET AAKFERQHM DSPDLGTLEV  
LFQGPLGSEF- EIDPK DLTFLKELGT GQFVVVKYK WRGQYDVAIK MIKEGSMSED  
EFIEEAKVMM NLSHEKLVQL YGVCTKQRPI FIITEYMANG CLLNYLREMR HRFQTQQLLE  
MCKDVCEAME YLESKQLHR DLAARNCLVN DQGVVKVSDF GLSRYVLDDE YTSSVGSKFP  
VRWSPPEVLM YSKFSSKSDI WAFGVLWWEI YSLGKMPYER FTNSETAEHI AQGLRLYRPH  
LASEKVYTIM YSCWHEKADE RPTFKILLSN ILDVMDEES