

**KSA544Mu11 96T x5**  
**ELISA Kit DIY Materials**  
**For Immunoglobulin G (IgG)**  
**Organism Species: *Mus musculus* (Mouse)**  
***Instruction manual***

FOR RESEARCH USE ONLY  
NOT FOR USE IN CLINICAL DIAGNOSTIC PROCEDURES

---

---

2nd Edition

### **[ INTENDED USE ]**

This 'Do it Yourself (DIY)' assay kit contains materials for developing your own immunoassays. This may include the development of competitive inhibition ELISA to measure IgG in mouse serum, plasma, tissue homogenates, cell lysates, cell culture supernates and other biological fluids in vitro. This kit contains sufficient materials for preparation of at least five 96-well plates. Sample Preparation, Assay Protocol, and Detection Range for Reference are provided as suggestions only. Researchers should optimize the use of kit materials and protocols for their own model system and determine if the kit is suitable for their samples and immunoassay.

### **[ REAGENTS AND MATERIALS PROVIDED ]**

<b>Components</b>	<b>Quantity</b>	<b>Form</b>
Standard	50ug	Lyophilized, 5 vials
Capture Antibody	240ug/0.06 mL	Liquid, 1 vial, contains 0.1% sodium azide
Biotin-labeled Competitor	40ug/0.06 mL	Liquid, 1 vial, contains 0.1% sodium azide
Streptavidin-HRP	0.6 mL	Liquid, 1 vial, contains 0.05% Proclin300

TMB Substrate	48 mL	Liquid, 1 vial
96-well Plate	96 wells	5 plates

## **[ Recommended Buffers and Solutions ]**

ASSAY Kit DIY Support Pack 2, **Cat # IS050**, which includes Plate Sealer, Coating Buffer, Blocking Buffer, Reagent Diluent 1, Reagent Diluent 2, Reagent Diluent 3, Wash Buffer, Enhancer is highly recommended for reagent preparation.

**Notes:** The recommended Cloud-Clone's diluents and buffers contained in IS050 are validated in the lab, other reagents selected for use can alter the performance of an immunoassay.

## **[ STORAGE ]**

Antibodies, Standard, Biotin-labeled Competitor and Streptavidin-HRP should be stored at -20°C. TMB should be stored at 4°C. 96-well Plate could be stored at room temperature. The unopened reagents are valid for 12 months, they are stable for one month after opening when stored at 4°C. Please make all solutions fresh before the experiment.

## **[ REAGENT PREPARATION ]**

Bring all components to room temperature (18-25°C) before use. Working solutions should be prepared and used immediately.

**Standard:** Reconstitute one vial of Standard with 0.5mL of working solution of Reagent Diluent 1 (Cat # IS050), kept for 10 minutes at room temperature, shake gently (not to foam). The concentration of the standard is 100ug/mL. Then make serial dilution of the Standard with working solution of Reagent Diluent 1 in 3 times to gain a proper standard curve.

**Capture Antibody:** Briefly spin or centrifuge the stock Capture Antibody before use. Aspirate appropriate volume of Capture Antibody, 1: 1000 dilution in working solution of Coating Buffer (Cat # IS050) for plate coating.

**Biotin-labeled Competitor:** Briefly spin or centrifuge the stock Biotin-labeled Competitor before use. Aspirate appropriate volume of Biotin-labeled Competitor, 1: 1000 dilution in working solution of Reagent Diluent 2 (Cat # IS050).

**Streptavidin-HRP:** Briefly spin or centrifuge the stock Streptavidin-HRP before use. Aspirate appropriate volume of the reagent, 1: 100 dilution in working solution of Reagent Diluent 3 (Cat # IS050).

Cloud-Clone's product of Assay Kit DIY Support Pack 2 (Catalog: IS050), which includes all kinds of buffers is highly recommended for reagent preparation.

## **[ SAMPLE PREPARATION ]**

Serum/plasma samples require about a 2,000 fold dilution. For example, to prepare a 1:2,000 dilution of sample, transfer 20 $\mu$ L of sample to 380 $\mu$ L PBS. This yields a 1:20 dilution. Next, dilute the 1:20 sample by transferring 10 $\mu$ L to 990 $\mu$ L PBS. You now have a 1:2,000 dilution of your sample. Mix thoroughly at each stage. Sample should be diluted by 0.01mol/L PBS(PH=7.0-7.2).

## **[ ASSAY PROTOCOL ]**

### **Plate Preparation:**

1. Dilute the Capture Antibody to working concentration in Coating Buffer (Cat # IS050). Immediately coat the 96-well microplates with 100 $\mu$ L per well of the diluted Capture Antibody. Seal the plate and incubate overnight at 4°C or incubate at 37°C for 2 hours.
2. Aspirate the solution and wash with 350 $\mu$ L of working solution of Wash Buffer (Cat # IS050) to each well using a squirt bottle, multi-channel pipette, manifold dispenser or auto-washer, and let it sit for 1~2 minutes. Remove the remaining liquid from all wells completely by snapping the plate onto absorbent paper.
3. Block plates by adding 200 $\mu$ L of working solution of Blocking Buffer (Cat # IS050) to each well. Incubate at 37°C for 1.5 hours.
4. Repeat the aspiration/wash process as in step 2. The plates are now ready for sample detection.

### **Commonly Used Assay Procedure:**

1. Add 50 $\mu$ L of different concentrations of standards, samples into the appropriate wells. And then add 50 $\mu$ L of working solution of Biotin-labeled Competitor to each well immediately. Shake the plate gently (using a microplate shaker is recommended). Cover with the Plate sealer. Incubate for 1 hour at 37°C.

- 2.Repeat the aspiration/wash process for 3 times as in Step 2 of plate preparation.
- 3.Add 100 $\mu$ L of working solution of Streptavidin-HRP to each well, cover the wells, and incubate for 30 minutes at 37°C.
- 4.Repeat the aspiration/wash process for total 5 times as in Step 2.
- 5.Add 90 $\mu$ L of TMB Substrate (Cat # IS050) to each well. Cover the wells, and incubate for 10 - 20 minutes at 37°C. Protect from light.
- 6.Add 50 $\mu$ L of Stop Solution (1mol/L H<sub>2</sub>SO<sub>4</sub>) to each well. Mix the liquid by tapping the side of the plate.
- 7.Run the microplate reader and conduct measurement at 450nm immediately.

### **[ DETECTION RANGE FOR REFERENCE ]**

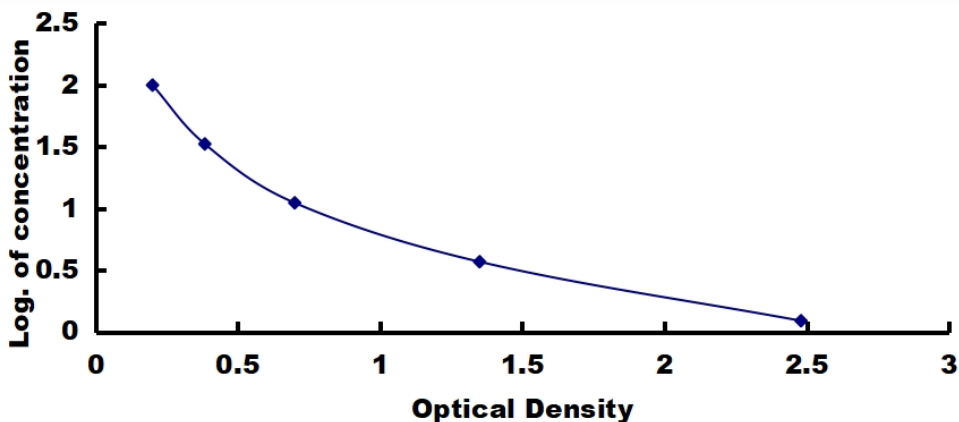
The detection range of ELISA prepared by these materials in our lab is 1.23-100ug/mL.

### **[ SPECIFICITY ]**

This assay has high sensitivity and excellent specificity for detection of IgG.

### **[ TYPICAL DATA ]**

Typical standard curve below is provided for reference only. A standard curve should be generated for each experiment.



**Typical Standard Curve of ELISA Assay for Mouse, IgG.**