

**RPB433Ga01 100µg**  
**Enolase, Muscle Specific (MSE)**  
**Organism Species: Chicken (Gallus)**  
***Instruction manual***

FOR IN VITRO USE AND RESEARCH USE ONLY  
NOT FOR USE IN CLINICAL DIAGNOSTIC PROCEDURES

---

9th Edition (Revised in Jul, 2013)

**[ PROPERTIES ]**

**Residues:** Met1~Lys434 (Accession # P07322),  
with two N-terminal Tags, His-tag and GST-tag.

**Host:** *E. coli*

**Subcellular Location:** Cytoplasm.

**Purity:** >95%

**Endotoxin Level:** <1.0EU per 1µg  
(determined by the LAL method).

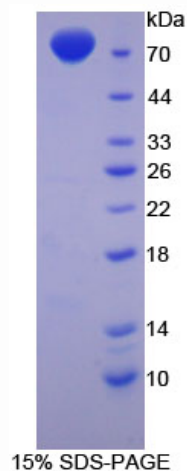
**Formulation:** Supplied as lyophilized form in PBS,  
pH7.4, containing 5% sucrose, 0.01% sarcosyl.

**Predicted isoelectric point:** 6.6

**Predicted Molecular Mass:** 79.2kDa

**Applications:** SDS-PAGE; WB; ELISA; IP.

(May be suitable for use in other assays to be determined by the end user.)



**[ USAGE ]**

Reconstitute in sterile PBS, pH7.2-pH7.4.

## [ STORAGE AND STABILITY ]

**Storage: Avoid repeated freeze/thaw cycles.**

Store at 2-8°C for one month.

Aliquot and store at -80°C for 12 months.

**Stability Test:** The thermal stability is described by the loss rate of the target protein. The loss rate was determined by accelerated thermal degradation test, that is, incubate the protein at 37°C for 48h, and no obvious degradation and precipitation were observed. (Referring from China Biological Products Standard, which was calculated by the Arrhenius equation.) The loss of this protein is less than 5% within the expiration date under appropriate storage condition.

## [ SEQUENCES ]

The target protein is fused with two N-terminal Tags, His-tag and GST-tag, its sequence is listed below.

MSPILGYWKI KGLVQPTRL L LEYLEEKYEE HLYERDEGDK WRNKKFELGL EFPNLPYYID  
GDVKLTQSMA IIRYIADKHN MLGGCPKERA EISMLEGAVL DIRYGVSRIA YSKDFETLKV  
DFLSKLPEML KMFEDRLCHK TYLNGDHVTH PDFMLYDALD VVLYMDPMCL DAFPKLVCFK  
KRIEAIQID KYLKSSKYIA WPLQGWQATF GGGDHPPKSD GSTSGSGHHH HHSAGLVPR  
GSTAIGMKET AAARKFERQHM DSPDLGTLEV LFQGPLGSEF-MSIQKIHARE ILDSRGEPTV  
EVDLHTAKGH FRAAVPSGAS TGIHEALEPR DGDKKRFLGK GVLKAVEHIN KTIGPALIEK  
KISVVEQEKI DKVMIEMDGT ENKSKFGANA ILGVSLAVCK AGAAEKGVPL YRHIADLAGN  
TELILPVPFV NVINGGSHAG NKLAMQEFMV LPVGAASFHD AMRVGAEVYH SLKGVKAKY  
GKDATNVGGE GGFAPNILDN HEALELLKAA IAQAGYTDKV VIGMDVAASE FCRDGRYHLD  
FKSPPHTKRY ITGEQLGEIY RGFIKDYPPV SIEDPFDQDDWEAWKRFV FH VDIQVVGDLL  
TVTNPKRIAH GAEQHACNCL LLKVNQIGSV TESIACKLA QSHGWGVMVS HRSGETEDTF  
IADLVVGLCT GQIKTGAPCR SERLAKYNQL MRIEEALGDKAKFAGRKFRN PKAK