

EPA017Hu62 100µg

Eukaryotic E-cadherin

Organism Species: *Homo sapiens (Human)*

Instruction manual

FOR RESEARCH USE ONLY

NOT FOR USE IN CLINICAL DIAGNOSTIC PROCEDURES

13th Edition (Revised in Aug, 2023)

[PROPERTIES]

Source: Eukaryotic expression

Host: 293F cell

Residues: Asp155~Ile707

Tags: N-terminal His Tag

Subcellular Location: Membrane, Plasma, Golgi apparatus, Endoplasmic reticulum lumen

Purity: > 90%

Traits: Freeze-dried powder

Buffer formulation: PBS, pH7.4, containing 5% Trehalose .

Original Concentration: 150µg/mL

Applications: Positive Control; Immunogen; SDS-PAGE; WB.

(May be suitable for use in other assays to be determined by the end user.)

Predicted isoelectric point: 4.0

Predicted Molecular Mass: 62.0kDa

Accurate Molecular Mass: 72kDa as determined by SDS-PAGE reducing conditions.

Phenomenon explanation:

The possible reasons that the actual band size differs from the predicted are as follows:

1. Splice variants: Alternative splicing may create different sized proteins from the same gene.
2. Relative charge: The composition of amino acids may affects the charge of the protein.
3. Post-translational modification: Phosphorylation, glycosylation, methylation etc.
4. Post-translation cleavage: Many proteins are synthesized as pro-proteins, and then cleaved to give the active form.
5. Polymerization of the target protein: Dimerization, multimerization etc.

[USAGE]

Reconstitute in 10mM PBS (pH7.4) to a concentration of 0.1-1.0 mg/mL. Do not vortex.

[STORAGE AND STABILITY]

Storage: Avoid repeated freeze/thaw cycles.

Store at 2-8°C for one month.

Aliquot and store at -80°C for 12 months.

Stability Test: The thermal stability is described by the loss rate. The loss rate was determined by accelerated thermal degradation test, that is, incubate the protein at 37°C for 48h, and no obvious degradation and precipitation were observed. The loss rate is less than 5% within the expiration date under appropriate storage condition.

[SEQUENCE]

```

DWVIPP  I SCPENEEKGP  FPKNLVQIKS  NKDKEGKVFY  SITGQGADTP  PVGVFIIERE
TGWLKVTEPL  DRERIATYTL  FSHAVSSNGN  AVEDPMEILI  TVTDQNDNKP  EFTQEVFKGS
VMEGALPGTS  VMEVTATDAD  DDVNTYNAAI  AYTILSQDPE  LPDKNMFTIN  RNTGVISVVT
TGLDRESFPT  YTLVVQAADL  QGEGLSTTAT  AVITVTDND  NPPIFNPTTY  KGQVPENEAN
VVITTLKVTD  ADAPNTPAWE  AVYTILNDDG  GQFVVTTNPV  NNDGILKTAK  GLDFEAKQQY
ILHVAVTNVV  PFEVSLTST  ATVTVDVLDV  NEAPIFVPPE  KRVEVSEDFG  VGQEITSYTA
QEPDTFMEQK  ITYRIWRDTA  NWLEINPDTG  AISTRAELDR  EDFEHVKNST  YTALIATDN
GSPVATGTGT  LLLILSDVND  NAPIPEPRTI  FFCERNPKPQ  VINIIDADLP  PNTSPFTAEL
THGASANWTI  QYNDPTQESI  ILKPKMALEV  GDYKINLKLM  DNQNKDQVTT  LEVSVCDCEG
AAGVCRKAQP  VEAGLQI
  
```

[IDENTIFICATION]

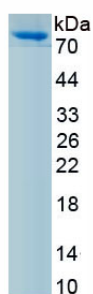


Figure. SDS-PAGE

[IMPORTANT NOTE]

The kit is designed for research use only, we will not be responsible for any issue if the kit was used in clinical diagnostic or any other procedures.