

EPA866Hu62 100µg

Eukaryotic Parathyroid Hormone (PTH)

Organism Species: *Homo sapiens (Human)*

Instruction manual

FOR RESEARCH USE ONLY

NOT FOR USE IN CLINICAL DIAGNOSTIC PROCEDURES

12th Edition (Revised in Aug, 2016)

[PROPERTIES]

Source: Eukaryotic expression

Host: 293F cell

Residues: Ser32-Gln115

Tags: N-terminal His Tag

Subcellular Location: Secreted

Purity: > 90%

Traits: Freeze-dried powder

Buffer formulation: PBS, pH7.4, containing 5% Trehalose.

Original Concentration: 300µg/mL

Applications: Positive Control; Immunogen; SDS-PAGE; WB.

(May be suitable for use in other assays to be determined by the end user.)

Predicted isoelectric point: 9.9

Predicted Molecular Mass: 11.0kDa

Accurate Molecular Mass: 12kDa as determined by SDS-PAGE reducing conditions.

[USAGE]

Reconstitute in 10mM PBS (pH7.4) to a concentration of 0.1-1.0 mg/mL. Do not vortex.

[STORAGE AND STABILITY]

Storage: Avoid repeated freeze/thaw cycles.

Store at 2-8°C for one month.

Aliquot and store at -80°C for 12 months.

Stability Test: The thermal stability is described by the loss rate. The loss rate was determined by accelerated thermal degradation test, that is, incubate the protein at 37°C for 48h, and no obvious degradation and precipitation were observed. The loss rate is less than 5% within the expiration date under appropriate storage condition.

[SEQUENCE]

SVSEIQLMHNLGKHLNSMERVEWLRKKLQDVHNFVALGAPLAPRDAGSQRPKKEDNVLVESHEKSLGEADKADVNVLTAKASQ

[IDENTIFICATION]

CA GAT CT GT GAG T GAA TAC AG CT TAT GCA TAC CT TGG AAA CAC T C T G AACT CG AT GG AG AG G TAG AT G GCT G C GT A GA AG CT G C A G G AT GT G C A G A T T T T GT T G C C T T G G A G T C T C T A G C T C C C A G G A T C T T G G T T C C C A G A G G C C C G A A A A A G G A A G C A T G T C T T G G T T G A G A G C A T G A A A A A G T C T T G G A G A G
 R S V S E I Q L M H N L G K H L N S M E R V E W L R K K L Q D V H N F V A L G A P L A P R D A G S Q R P R K K E D N V L V E S H E K S L G E A D K A D V N V L T A K A S Q

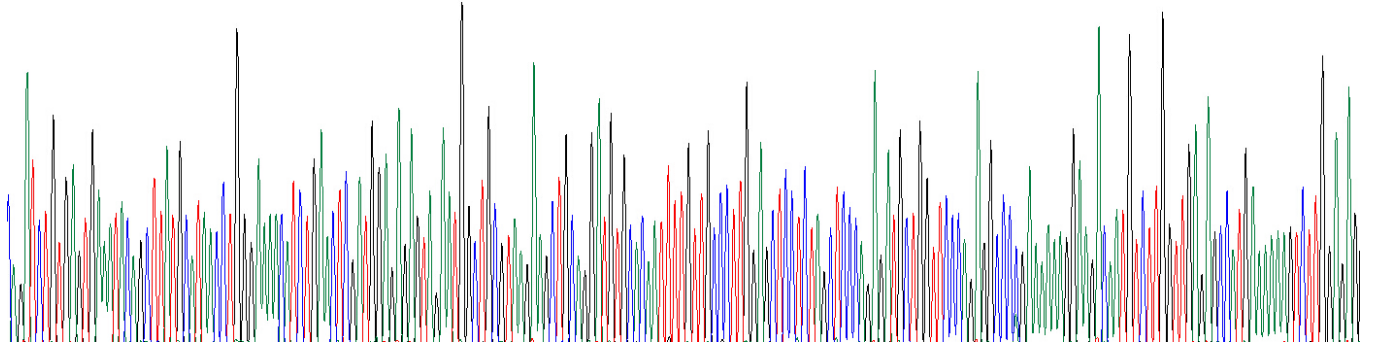


Figure . Gene Sequencing (extract)

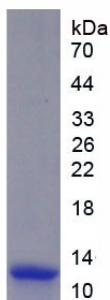


Figure. SDS-PAGE

[IMPORTANT NOTE]

The kit is designed for research use only, we will not be responsible for any issue if the kit was used in clinical diagnostic or any other procedures.