

**EPE256Hu61 500µg**

**Eukaryotic Procollagen Lysine-1,2-Oxoglutarate-5-Dioxygenase 1 (PLOD1)**

**Organism Species: *Homo sapiens (Human)***

***Instruction manual***

FOR RESEARCH USE ONLY

NOT FOR USE IN CLINICAL DIAGNOSTIC PROCEDURES

---

12th Edition (Revised in Aug, 2016)

**[ PROPERTIES ]**

**Source:** Eukaryotic expression

**Host:** *E.coli*

**Residues:** Gln636~Pro727

**Tags:** N-terminal His Tag

**Subcellular Location:** Golgi apparatus

**Purity:** > 90%

**Traits:** Freeze-dried powder

**Buffer formulation:** 20mM Tris, 150mM NaCl, pH8.0, containing 5% Trehalose.

**Original Concentration:** 200µg/mL

**Applications:** Positive Control; Immunogen; SDS-PAGE; WB.

(May be suitable for use in other assays to be determined by the end user.)

**Predicted isoelectric point:** 9.1

**Predicted Molecular Mass:** 12.1kDa

**Accurate Molecular Mass:** 15kDa as determined by SDS-PAGE reducing conditions.

**[ USAGE ]**

Reconstitute in 20mM Tris, 150mM NaCl (pH8.0) to a concentration of 0.1-1.0 mg/mL. Do not vortex.

**[ STORAGE AND STABILITY ]**

**Storage:** Avoid repeated freeze/thaw cycles.

Store at 2-8°C for one month.

Aliquot and store at -80°C for 12 months.

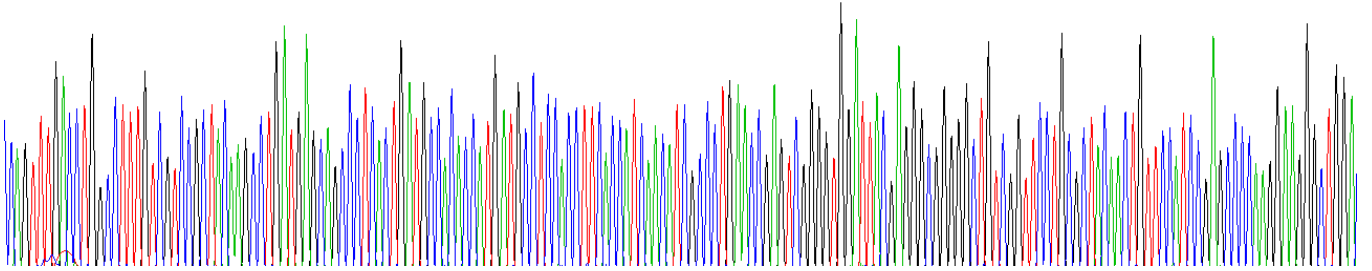
**Stability Test:** The thermal stability is described by the loss rate. The loss rate was determined by accelerated thermal degradation test, that is, incubate the protein at 37°C for 48h, and no obvious degradation and precipitation were observed. The loss rate is less than 5% within the expiration date under appropriate storage condition.

**[ SEQUENCE ]**

QFDLA FVVRYKPDEQ  
PSLMPHHDAS TFTINIALNR VGVDYEGGGC RFLRYNCSIR APRKGWTLMH  
PGRLTHYHEG LPTTRGTRYI AVSFVDP

**[ IDENTIFICATION ]**

ATGTTTGACCTGGCCCTTGTGTCGCTCCAGAGCCTGATGAGCAGCCTCCTGATGACCAACCATGATGCTTCACCTTCACCATGACATGCGCTGACCGGAGTGG9999TGGATTTAGAGGGGCG9999CTGTGGTTCCTGGCTTACCACTGTTCATCGAGGCCAGGAGGG99CTGG#  
Q F D L A F V V R Y K P D E Q P S L M P H H D A S T F T I N I A L N R V G V D Y E G G G C R F L R Y N C S I R A P R K G W T



**Figure. Gene Sequencing (Extract)**

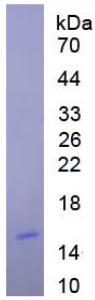


Figure. SDS-PAGE

**[ IMPORTANT NOTE ]**

The kit is designed for research use only, we will not be responsible for any issue if the kit was used in clinical diagnostic or any other procedures.