

pA91120Mu81

FITC-linked Antibody to Arginase (Arg)

Organism: Mus musculus (Mouse)

Instruction manual

FOR IN VITRO USE AND RESEARCH USE ONLY
NOT FOR USE IN CLINICAL DIAGNOSTIC PROCEDURES

7th Edition (Revised in May, 2013)

[**PRODUCT INFORMATION**]

Immunogen: Arg, Mouse

Conjugation: FITC

Clonality: Polyclonal

Host: Rabbit

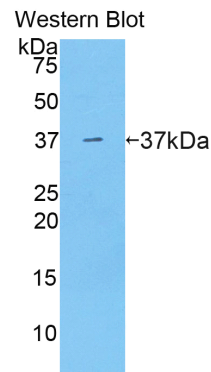
Immunoglobulin Type: IgG

Purification: Affinity Chromatography.

Applications: WB, ICC, IHC-P, IHC-F, ELISA

Concentration: 200µg/mL

UOM: 100µg



Sample: Recombinant Arg, Mouse




[**IMMUNOGEN INFORMATION**]

Immunogen: Recombinant Arg (Met1~Lys323) expressed in *E. coli*.

USCN Accession No.: rP91120Mu01

Sequence: The target protein is fused with N-terminal His-Tag and its sequence is listed below.

MGHHHHHHSGSEF-MSSKPKSLEI IGAPFSKGQP RGGVEKGPAA LRKAGLLEKL
KETEYDVRDH GDIAFVDVNP DSSFQIVKNP RSVGKANEEL AGVVAEVQKN GRVSVVLGGD
HSLAVGSISG HARVHPDLCV IWVDAHTDIN TPLTTSSGNL HGQPVSFLLK ELKGKFPDVP
GFSWVTPCIS AKDIVYIGLR DVDPGEHYII KTLGIKYFSM TEVDKLGIGK VMEETFSYLL
GRKKRPIHLS FDVDGLDPAF TPATGTPVLG GLSYREGLYI TEEIYKTGLL SGLDIMEVNP
TLGKTAEEVK STVNTAVALT LACFGTQREG NHKPGTDYLK PPK

Unique product Superb quality Client favorite Nicest service  ISO9001:2008 ;  ISO13485:2003 ; 

[ANTIBODY SPECIFICITY]

The antibody is a rabbit polyclonal antibody raised against Arg. It has been selected for its ability to recognize Arg in immunohistochemical staining and western blotting.

[APPLICATIONS]

Western blotting: 1:100-400

Immunocytochemistry in formalin fixed cells: 1:100-500

Immunohistochemistry in formalin fixed frozen section: 1:100-500

Immunohistochemistry in paraffin section: 1:50-200

Enzyme-linked Immunosorbent Assay: 1:100-200

Optimal working dilutions must be determined by end user.

[CONTENTS]

Form & Buffer: Supplied as solution form in PBS, pH7.4, containing 0.02% NaN₃, 50% glycerol.

[STORAGE]

Store at 4°C for frequent use. Stored at -20°C to -80°C in a manual defrost freezer for one year without detectable loss of activity. Avoid repeated freeze-thaw cycles.

Note: *As fluorescence can photobleach when exposed to light, so the antibody must be protected from light.*