

PAB690Hu81**FITC-Linked Antibody to Permeability Glycoprotein (Pgp)****Organism Species: Homo sapiens (Human)*****Instruction manual***

FOR IN VITRO USE AND RESEARCH USE ONLY

NOT FOR USE IN CLINICAL DIAGNOSTIC PROCEDURES

10th Edition (Revised in Jan, 2014)

[PRODUCT INFORMATION]**Immunogen:** Pgp, Human**Clonality:** Polyclonal**Conjugation:** FITC**Host:** Rabbit**Immunoglobulin Type:** IgG**Purification:** Affinity Chromatography.**Applications:** WB, ICC, IHC-P, IHC-F, ELISA**Concentration:** 200µg/mL**UOM:** 50µg**[IMMUNOGEN INFORMATION]****Immunogen:** Recombinant Pgp (Phe394~Val672) with two N-terminal Tags, His-tag and GST-tag expressed in *E.coli*.**Accession No.:** RPB690Hu01**[ANTIBODY SPECIFICITY]**

The antibody is a rabbit polyclonal antibody raised against Pgp. It has been selected for its ability to recognize Pgp in immunohistochemical staining and western blotting.

[APPLICATIONS]

Western blotting: 1:50-400

Immunocytochemistry in formalin fixed cells: 1:50-500

Immunohistochemistry in formalin fixed frozen section: 1:50-500

Immunohistochemistry in paraffin section: 1:10-100

Enzyme-linked Immunosorbent Assay: 1:100-200

Optimal working dilutions must be determined by end user.

[CONTENTS]

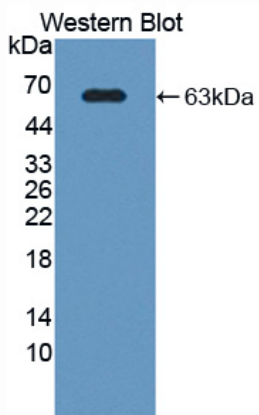
Form & Buffer: Supplied as solution form in PBS, pH7.4, containing 0.02% NaN₃, 50% glycerol.

[STORAGE]

Store at 4°C for frequent use. Stored at -20°C in a manual defrost freezer for one year without detectable loss of activity. Avoid repeated freeze-thaw cycles.

Note: *As fluorescence can photobleach when exposed to light, so the antibody must be protected from light.*

[IMAGES]



Used in Western Blot, Sample:
Recombinant Pgp, Human