

P93506Mu01
Heat Shock 70kDa Binding Protein 1 (HSPBP1)
Organism: Mus musculus (Mouse)
Instruction manual

FOR IN VITRO USE AND RESEARCH USE ONLY
 NOT FOR USE IN DIAGNOSTIC OR THERAPEUTIC PROCEDURES

5th Edition (Revised in January, 2013)

[DESCRIPTION]

Protein Names: Heat Shock 70kDa Binding Protein 1

Synonyms: HSPBP1, Hspbp

Species: Mouse

Size: 100µg

Source: *Escherichia coli*-derived

Subcellular Location: .

[PROPERTIES]

Residues: Ala209~Ser354 (Accession # Q99P31),
 with N-terminal His-Tag.

Grade & Purity: >95%, 20kDa as determined by
 SDS-PAGE reducing conditions.

Formulation: Supplied as lyophilized form in PBS, pH
 7.4, containing 5% sucrose.

Endotoxin Level: <1.0 EU per 1µg (determined by
 the LAL method).

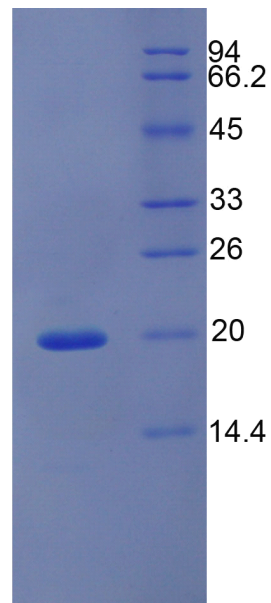
Applications: SDS-PAGE; WB; ELISA; IP.

(May be suitable for use in other assays to be determined by the end user.)




Predicted Molecular Mass: 18.2kDa

Predicted isoelectric point: 5.9

Mouse HSPBP1 kDa



15% SDS-PAGE

Unique product Superb quality Client favorite Nicest service  ISO9001:2008;  ISO13485:2003;  CE

[PREPARATION]

Reconstitute in sterile PBS, pH7.2-pH7.4.

[STORAGE AND STABILITY]

Storage: Avoid repeated freeze/thaw cycles.

Store at 2-8°C for one month.

Aliquot and store at -80°C for 12 months.

Stability Test: The thermal stability is described by the loss rate of the target protein. The loss rate was determined by accelerated thermal degradation test, that is, incubate the protein at 37°C for 48h, and no obvious degradation and precipitation were observed. (Referring from China Biological Products Standard, which was calculated by the Arrhenius equation.) The loss of this protein is less than 5% within the expiration date under appropriate storage condition.

[SEQUENCES]

The target protein is fused with N-terminal His-Tag, its sequence is listed below.

MGHHHHHSGSEF-AI SCLVREQEAG LLQFLRLDGF SVLMRAMQQQ VQKLKVKSAF
LLQNLLVGHP EHKGTLCSMG MVQQLVALVR TEHSPFHEHV LGALCSLVTD FPQGVRECRE
PELGLEELLR HRCQLLQRE EYQEELEFCE KLLQTCFSSP TDDS