

**RPC095Mu01 100µg**

**Integrin Alpha 9 (ITGa9)**

**Organism Species: Mus musculus (Mouse)**

***Instruction manual***

FOR IN VITRO USE AND RESEARCH USE ONLY  
NOT FOR USE IN CLINICAL DIAGNOSTIC PROCEDURES

---

9th Edition (Revised in Jul, 2013)

## **[ PROPERTIES ]**

**Residues:** Ser788~Asp1030 (Accession # B8JK39),  
with two N-terminal Tags, His-tag and GST-tag.

**Host:** *E. coli*

**Purity:** >95%

**Endotoxin Level:** <1.0EU per 1µg  
(determined by the LAL method).

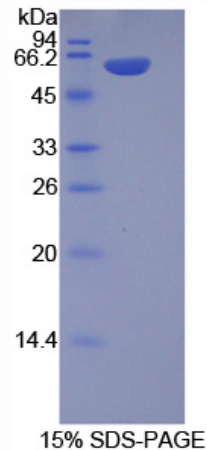
**Formulation:** Supplied as lyophilized form in PBS,  
pH7.4, containing 5% sucrose, 0.01% sarcosyl.

**Predicted isoelectric point:** 6.1

**Predicted Molecular Mass:** 59.8kDa

**Applications:** SDS-PAGE; WB; ELISA; IP.

(May be suitable for use in other assays to be determined by the end user.)



## **[ USAGE ]**

Reconstitute in sterile PBS, pH7.2-pH7.4.

## **[ STORAGE AND STABILITY ]**

**Storage: Avoid repeated freeze/thaw cycles.**

Store at 2-8°C for one month.

Aliquot and store at -80°C for 12 months.

**Stability Test:** The thermal stability is described by the loss rate of the target protein. The loss rate was determined by accelerated thermal degradation test, that is, incubate the protein at 37°C for 48h, and no obvious degradation and precipitation were observed. (Referring from China Biological Products Standard, which was calculated by the Arrhenius equation.) The loss of this protein is less than 5% within the expiration date under appropriate storage condition.

## **[ SEQUENCES ]**

The target protein is fused with two N-terminal Tags, His-tag and GST-tag, its sequence is listed below.

MSPILGYWKI KGLVQPTRL L LEYLEEKYEE HLYERDEGDK WRNKKFELGL EFPNLPYYID  
GDVKLTQSMA IIRYIADKHN MLGGCPKERA EISMLEGAVL DIRYGVSR IA YSKDFETLKV  
DFLSKLP EML KMFEDRLCHK TYLNGDHVTH PDFMLYDALD VVLYMDPMCL DAFP KLVCFK  
KRIEAI PQID KYLKSSKYIA WPLQG WQATF GGGDHPPKSD GSTSGSGHHH HHSAGLVPR  
GSTAIGMKET AAKFERQHM DSPDLGTGGG SGIEGRGSMG YRGSEF-SVD ASNFIQLDDQ  
ECHFQPVNIT LQVYNMGPST LPGSSVSISF PSRLSPGGAE MFQVQDMVVS QEKGNC SLQR  
NPTPCIIPQE QENIFHTIFA FFSKSGRKVL DCEKPGSFCL TLHCNLSALP KEESRTINLY  
MLLNTEILKK DSSSVIQFMA RAKVKVEPAL RVVEIANGNP EETLVVFEAL HNLEPRGYVV  
GWIIAISLLV GILIFLLAV LLWKMGFFRR RYKEIIAEK NRKENEDGWD