

**MAE251Hu21**

**Monoclonal Antibody to 4-Hydroxyphenylpyruvate Dioxygenase (HPD)**

**Organism Species: *Homo sapiens* (Human)**

***Instruction manual***

FOR RESEARCH USE ONLY

NOT FOR USE IN CLINICAL DIAGNOSTIC PROCEDURES

---

13th Edition (Revised in Aug, 2023)

**[ PROPERTIES ]**

**Source:** Monoclonal antibody preparation

**Host:** Mouse

**Antibody isotype:** IgG2a Kappa

**Purification:** Protein A + Protein G affinity chromatography

**Clone number:** D2

**Traits:** Liquid

**Concentration:** 1mg/ml

**UOM:** 100µl

**Cross Reactivity:** Porcine

**Applications:** WB; IHC; ICC/IF

**[ IMMUNOGEN ]**

**Immunogen:** Recombinant HPD (Thr2~Met393) expressed in *E.coli*

**Accession No.:** RPE251Hu01

**[ APPLICATIONS ]**

Western blotting: 0.01-2µg/mL

Immunohistochemistry: 5-30µg/mL

Immunocytochemistry: 5-20µg/mL

Optimal working dilutions must be determined by end user.

**[ FORMULATION ]**

**Form & Buffer:** Supplied as solution form in 0.01M PBS, pH7.4, containing 0.05% Proclin-300, 50% glycerol.

**[ STORAGE AND STABILITY ]**

**Storage:** Avoid repeated freeze/thaw cycles.

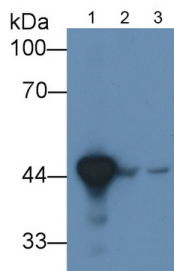
Store at 4°C for frequent use.

Aliquot and store at -20°C for 24 months.

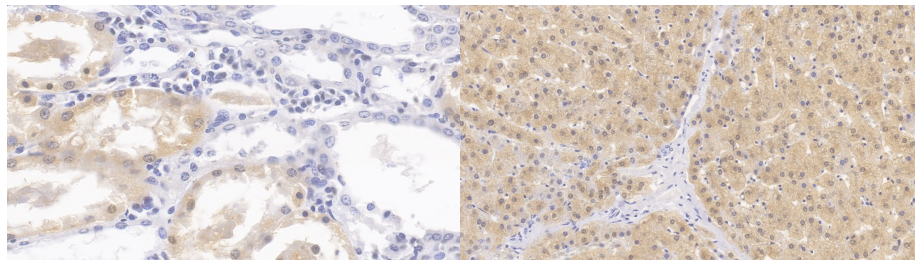
**Stability Test:** The thermal stability is described by the loss rate. The loss rate was determined

by accelerated thermal degradation test, that is, incubate the protein at 37°C for 48h, and no obvious degradation and precipitation were observed. The loss rate is less than 5% within the expiration date under appropriate storage condition.

**[ IDENTIFICATION ]**

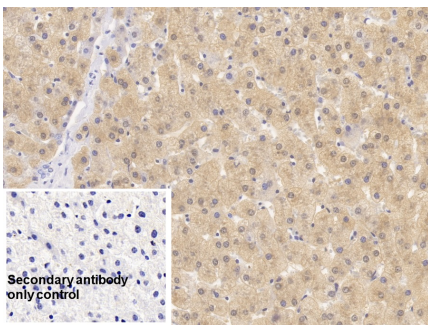


Western Blot Sample: Lane1: Human Liver lysate; Lane2: Porcine Kidney lysate; Lane3: HepG2 cell lysate;  
 Primary Ab: 2µg/ml Mouse Anti-Human HPD Antibody  
 Second Ab: 0.2µg/mL HRP-Linked Rabbit Anti-Mouse IgG Polyclonal Antibody  
 (Catalog: SAA544Mu19)

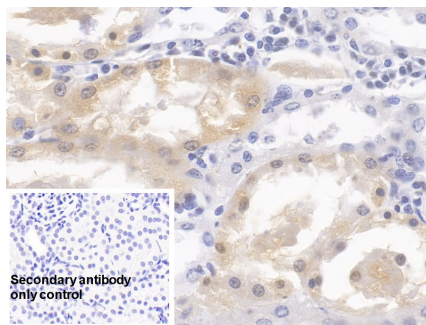


DAB staining on IHC-P; Samples: Human Kidney Tissue; Primary Ab: 30µg/ml Mouse Anti-Human HPD Antibody Second Ab: 2µg/mL HRP-Linked Caprine Anti-Mouse IgG Polyclonal Antibody (Catalog: SAA544Mu19)

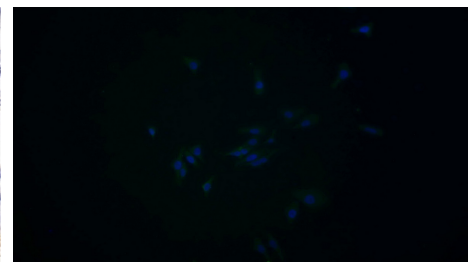
DAB staining on IHC-P; Samples: Human Liver Tissue; Primary Ab: 30µg/ml Mouse Anti-Human HPD Antibody Second Ab: 2µg/mL HRP-Linked Caprine Anti-Mouse IgG Polyclonal Antibody (Catalog: SAA544Mu19)



DAB staining on IHC-P; Sample: Human Liver Tissue Primary Ab: 30µg/ml Mouse Anti-Human HPD Antibody Control: Used PBS instead of primary antibody Second Ab: 2µg/ml HRP-Linked



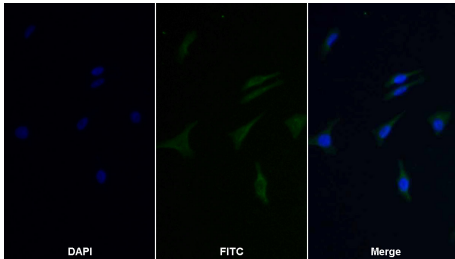
DAB staining on IHC-P; Sample: Human Kidney Tissue Primary Ab: 30µg/ml Mouse Anti-Human HPD Antibody Control: Used PBS instead of primary antibody Second Ab: 2µg/ml HRP-Linked



FITC staining on IF; Samples: Human HepG2 cell; Primary Ab: 20µg/ml Mouse Anti-Human HPD Antibody Second Ab: 1µg/ml FITC-Linked Caprine Anti-Mouse IgG Polyclonal Antibody (Catalog: SAA544Mu18)

Caprine Anti-Mouse IgG Polyclonal  
Antibody  
(Catalog: SAA544Mu19)

Caprine Anti-Mouse IgG Polyclonal  
Antibody  
(Catalog: SAA544Mu19)



FITC staining on IF;

Sample: HepG2 cell

Primary Ab: 20µg/ml Mouse Anti-  
Human HPD Antibody

Second Ab: 2µg/ml FITC-Linked  
Caprine Anti-Mouse IgG Polyclonal  
Antibody  
(Catalog: SAA544Mu11)

### [ **IMPORTANT NOTE** ]

The kit is designed for research use only, we will not be responsible for any issue if the kit was used in clinical diagnostic or any other procedures.