

**MAG369Hu22**

**Monoclonal Antibody to ATPase, Na<sup>+</sup>/K<sup>+</sup> Transporting Alpha 1 Polypeptide (ATP1a1)**

**Organism Species: *Homo sapiens (Human)***

***Instruction manual***

FOR RESEARCH USE ONLY

NOT FOR USE IN CLINICAL DIAGNOSTIC PROCEDURES

---

13th Edition (Revised in Aug, 2023)

**[ PROPERTIES ]**

**Source:** Monoclonal antibody preparation

**Host:** Mouse

**Antibody isotype:** IgG2b Kappa

**Purification:** Protein A + Protein G affinity chromatography

**Clone number:** C209

**Traits:** Liquid

**Concentration:** 1mg/ml

**UOM:** 100ul

**Cross Reactivity:** Mouse;Rat;Rabbit;Canine;Porcine;Bovine;Caprine;Ovine;Equine

**Applications:** WB; IHC; ICC; IP.

**[ IMMUNOGEN ]**

**Immunogen:** Recombinant ATP1a1 (His493~Ala660) expressed in *E.coli*

**Accession No.:** RPG369Hu01

**[ APPLICATIONS ]**

Western blotting: 0.01-2µg/mL;

Immunohistochemistry: 3-20µg/mL;

Immunocytochemistry: 5-20µg/mL;

Optimal working dilutions must be determined by end user.

**[ FORMULATION ]**

**Form & Buffer:** Supplied as solution form in 0.01M PBS, pH7.4, containing 0.05% Proclin-300, 50% glycerol.

**[ STORAGE AND STABILITY ]**

**Storage:** Avoid repeated freeze/thaw cycles.

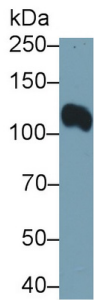
Store at 4°C for frequent use.

Aliquot and store at -20°C for 24 months.

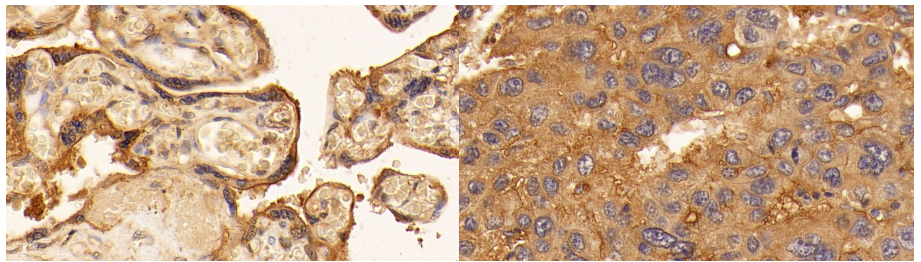
**Stability Test:** The thermal stability is described by the loss rate. The loss rate was determined

by accelerated thermal degradation test, that is, incubate the protein at 37°C for 48h, and no obvious degradation and precipitation were observed. The loss rate is less than 5% within the expiration date under appropriate storage condition.

**[ IDENTIFICATION ]**

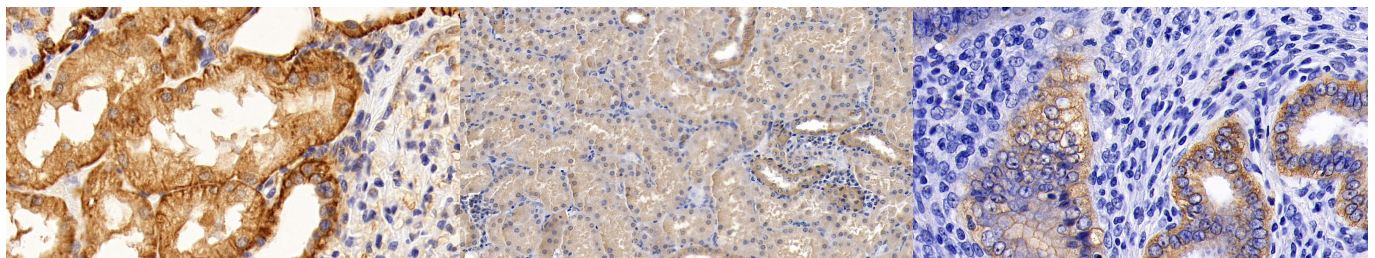


Western Blot; Sample: HCT116 cell lysate.



DAB staining on IHC-P; Sample: Human Placenta Tissue; Primary Ab: 10ug/ml Mouse Anti-Human ATP1a1 Antibody Second Ab: 2µg/mL HRP-Linked Caprine Anti-Mouse IgG Polyclonal Antibody (Catalog: SAA544Mu19)

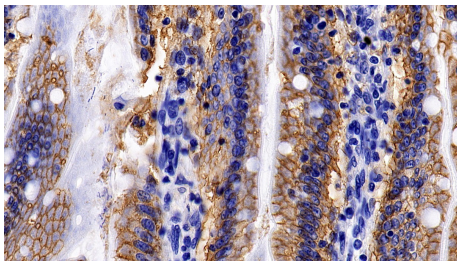
DAB staining on IHC-P; Sample: Human Liver cancer Tissue; Primary Ab: 10ug/ml Mouse Anti-Human ATP1a1 Antibody Second Ab: 2µg/mL HRP-Linked Caprine Anti-Mouse IgG Polyclonal Antibody (Catalog: SAA544Mu19)



DAB staining on IHC-P; Sample: Human Kidney Tissue; Primary Ab: 10ug/ml Mouse Anti-Human ATP1a1 Antibody Second Ab: 2µg/mL HRP-Linked Caprine Anti-Mouse IgG Polyclonal Antibody (Catalog: SAA544Mu19)

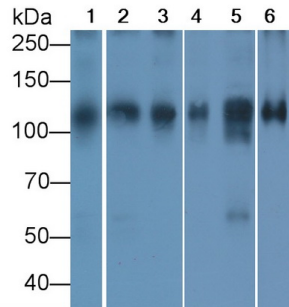
DAB staining on IHC-P; Sample: Porcine Kidney Tissue; Primary Ab: 20µg/ml Mouse Anti-Human ATP1a1 Antibody Second Ab: 2µg/mL HRP-Linked Caprine Anti-Mouse IgG Polyclonal Antibody (Catalog: SAA544Mu19)

DAB staining on IHC-P; Sample: Rat Uterus Tissue; Primary Ab: 3ug/ml Mouse Anti-Human ATP1a1 Antibody Second Ab: 2µg/mL HRP-Linked Caprine Anti-Mouse IgG Polyclonal Antibody (Catalog: SAA544Mu19)

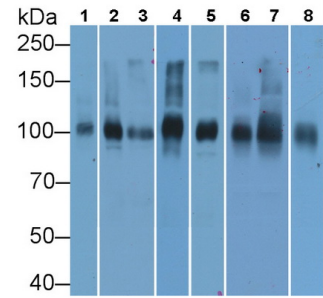


DAB staining on IHC-P;

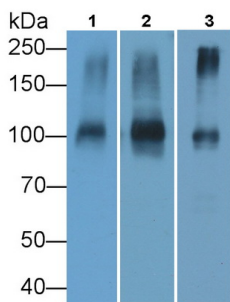
Sample: Rat Small intestine Tissue;  
 Primary Ab: 3ug/ml Mouse Anti-Human  
 ATP1a1 Antibody  
 Second Ab: 2µg/mL HRP-Linked  
 Caprine Anti-Mouse IgG Polyclonal  
 Antibody  
 (Catalog: SAA544Mu19)



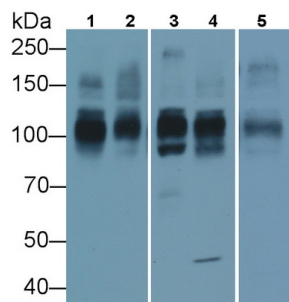
Western Blot; Sample: Lane1: Mouse  
 Heart lysate; Lane2: Porcine Heart  
 lysate; Lane3: Rat Heart lysate; Lane4:  
 Bovine Heart lysate; Lane5: Rabbit  
 Heart lysate; Lane6: Porcine Cerebrum  
 lysate  
 Primary Ab: 2µg/ml Mouse Anti-Human  
 ATP1a1 Antibody  
 Second Ab: 0.2µg/mL HRP-Linked  
 Caprine Anti-Mouse IgG Polyclonal  
 Antibody  
 (Catalog: SAA544Mu19)



Western Blot; Sample: Lane1: Caprine  
 Liver lysate; Lane2: Caprine Small  
 intestine lysate; Lane3: Caprine Colon  
 lysate; Lane4: Caprine Salivary gland  
 lysate; Lane5: Caprine Thyroid lysate;  
 Lane6: Bovine Kidney lysate; Lane7:  
 Bovine Cerebrum lysate; Lane8: Bovine  
 Heart lysate  
 Primary Ab: 2µg/ml Mouse Anti-Human  
 ATP1a1 Antibody  
 Second Ab: 0.2µg/mL HRP-Linked  
 Caprine Anti-Mouse IgG Polyclonal  
 Antibody  
 (Catalog: SAA544Mu19)



Western Blot; Sample: Lane1: Canine  
 Liver lysate; Lane2: Equine Liver lysate;  
 Lane3: Equine Skeletal muscle lysate  
 Primary Ab: 2µg/ml Mouse Anti-Human  
 ATP1a1 Antibody  
 Second Ab: 0.2µg/mL HRP-Linked  
 Caprine Anti-Mouse IgG Polyclonal



Western Blot; Sample: Lane1: Porcine  
 Adrenal gland lysate; Lane2: Porcine  
 Liver lysate; Lane3: Porcine Heart  
 lysate; Lane4: Porcine Trachea lysate;  
 Lane5: Porcine Small intestine lysate  
 Primary Ab: 1µg/ml Mouse Anti-Human  
 ATP1a1 Antibody

Antibody  
(Catalog: SAA544Mu19)

Second Ab: 0.2µg/mL HRP-Linked  
Caprine Anti-Mouse IgG Polyclonal  
Antibody  
(Catalog: SAA544Mu19)

**[ IMPORTANT NOTE ]**

The kit is designed for research use only, we will not be responsible for any issue if the kit was used in clinical diagnostic or any other procedures.