

MAB341Hu21

Monoclonal Antibody to Actin Alpha 1, Cardiac Muscle (ACTC1)

Organism Species: *Homo sapiens* (Human)

Instruction manual

FOR RESEARCH USE ONLY

NOT FOR USE IN CLINICAL DIAGNOSTIC PROCEDURES

13th Edition (Revised in Aug, 2023)

[PROPERTIES]

Source: Monoclonal antibody preparation

Host: Mouse

Antibody isotype: IgG2b Kappa

Purification: Protein A + Protein G affinity chromatography

Clone number: C3

Traits: Liquid

Concentration: 1mg/ml

UOM: 100ul

Cross Reactivity: Mouse;Rat;Rabbit;Canine;Porcine;Bovine;Gallus

Applications: WB; IHC; ICC; IP.

[IMMUNOGEN]

Immunogen: Recombinant ACTC1 (Asp156~Gly368) expressed in *E.coli*

Accession No.: RPB341Hu01

[APPLICATIONS]

Western blotting: 0.01-4µg/mL;

Immunohistochemistry: 5-20µg/mL;

Immunocytochemistry: 5-20µg/mL;

Optimal working dilutions must be determined by end user.

[FORMULATION]

Form & Buffer: Supplied as solution form in 0.01M PBS, pH7.4, containing 0.05% Proclin-300, 50% glycerol.

[STORAGE AND STABILITY]

Storage: Avoid repeated freeze/thaw cycles.

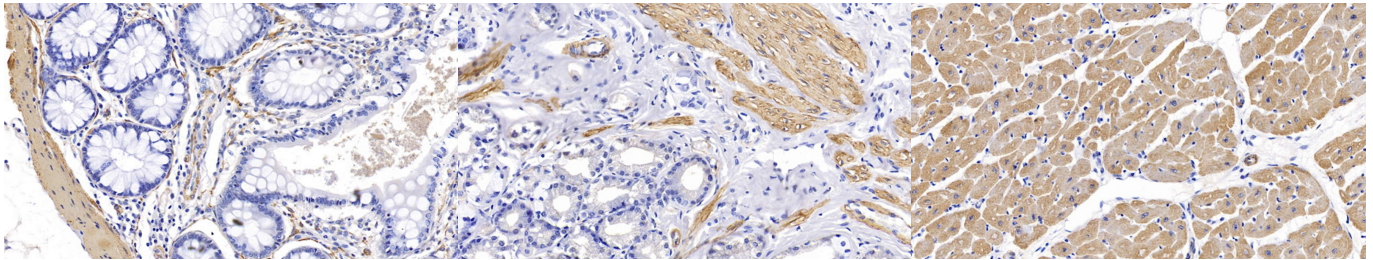
Store at 4°C for frequent use.

Aliquot and store at -20°C for 24 months.

Stability Test: The thermal stability is described by the loss rate. The loss rate was determined

by accelerated thermal degradation test, that is, incubate the protein at 37°C for 48h, and no obvious degradation and precipitation were observed. The loss rate is less than 5% within the expiration date under appropriate storage condition.

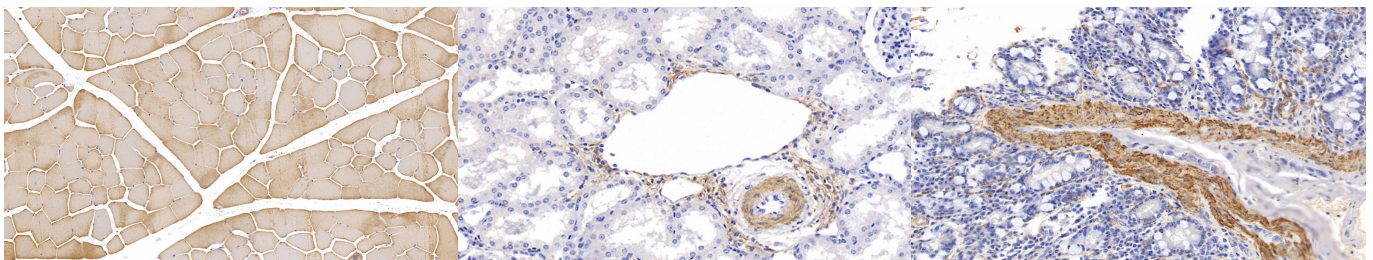
[IDENTIFICATION]



DAB staining on IHC-P; Samples: Human Colon Tissue; Primary Ab: 10µg/ml Mouse Anti-Human ACTC1 Antibody Second Ab: 2µg/mL HRP-Linked Caprine Anti-Mouse IgG Polyclonal Antibody (Catalog: SAA544Mu19)

DAB staining on IHC-P; Samples: Human Stomach Tissue; Primary Ab: 10µg/ml Mouse Anti-Human ACTC1 Antibody Second Ab: 2µg/mL HRP-Linked Caprine Anti-Mouse IgG Polyclonal Antibody (Catalog: SAA544Mu19)

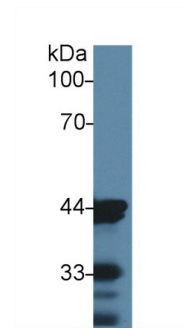
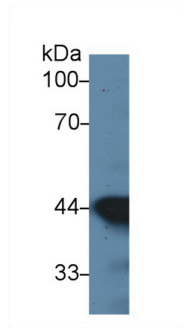
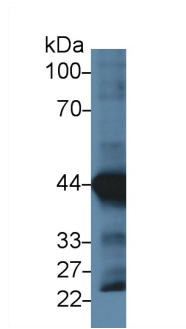
DAB staining on IHC-P; Samples: Human Cardiac Muscle Tissue; Primary Ab: 10µg/ml Mouse Anti-Human ACTC1 Antibody Second Ab: 2µg/mL HRP-Linked Caprine Anti-Mouse IgG Polyclonal Antibody (Catalog: SAA544Mu19)



DAB staining on IHC-P; Samples: Human Skeletal muscle Tissue; Primary Ab: 10µg/ml Mouse Anti-Human ACTC1 Antibody Second Ab: 2µg/mL HRP-Linked Caprine Anti-Mouse IgG Polyclonal Antibody (Catalog: SAA544Mu19)

DAB staining on IHC-P; Samples: Human Kidney Tissue; Primary Ab: 10µg/ml Mouse Anti-Human ACTC1 Antibody Second Ab: 2µg/mL HRP-Linked Caprine Anti-Mouse IgG Polyclonal Antibody (Catalog: SAA544Mu19)

DAB staining on IHC-P; Samples: Human Small intestine Tissue; Primary Ab: 20µg/ml Mouse Anti-Human ACTC1 Antibody Second Ab: 2µg/mL HRP-Linked Caprine Anti-Mouse IgG Polyclonal Antibody (Catalog: SAA544Mu19)



Western Blot; Sample: Rat Heart lysate;
Primary Ab: 1µg/ml Mouse Anti-Human

ACTC1 Antibody

Second Ab: 0.2µg/mL HRP-Linked

Caprine Anti-Mouse IgG Polyclonal
Antibody

(Catalog: SAA544Mu19)

Western Blot; Sample: Mouse Heart
lysate;

Primary Ab: 4µg/ml Mouse Anti-Human
ACTC1 Antibody

Second Ab: 0.2µg/mL HRP-Linked

Caprine Anti-Mouse IgG Polyclonal
Antibody

(Catalog: SAA544Mu19)

Western Blot; Sample: Mouse Skin
lysate;

Primary Ab: 4µg/ml Mouse Anti-Human
ACTC1 Antibody

Second Ab: 0.2µg/mL HRP-Linked

Caprine Anti-Mouse IgG Polyclonal
Antibody

(Catalog: SAA544Mu19)

[**IMPORTANT NOTE**]

The kit is designed for research use only, we will not be responsible for any issue if the kit was used in clinical diagnostic or any other procedures.