

MAA153Hu22

Monoclonal Antibody to Alpha-Fetoprotein (aFP)

Organism Species: *Homo sapiens (Human)*

Instruction manual

FOR RESEARCH USE ONLY

NOT FOR USE IN CLINICAL DIAGNOSTIC PROCEDURES

12th Edition (Revised in Aug, 2016)

[PROPERTIES]

Source: Monoclonal antibody preparation

Host: Mouse

Antibody isotype: IgG1 Kappa

Purification: Protein A + Protein G affinity chromatography

Clone number: C6

Traits: Liquid

Concentration: 1mg/ml

UOM: 100µl

Applications: WB; IHC; ICC; IP.

[IMMUNOGEN]

Immunogen: Recombinant aFP (Ile31~Pro171) expressed in *E.coli*

Accession No.: RPA153Hu01

[APPLICATIONS]

Western blotting: 0.5-5µg/mL;1:200-2000

Immunohistochemistry: 5-30µg/mL;1:20-300

Immunocytochemistry: 5-30µg/mL;1:20-300

Optimal working dilutions must be determined by end user.

[FORMULATION]

Form & Buffer: Supplied as solution form in 0.01M PBS, pH7.4, containing 0.05% Proclin-300, 50% glycerol.

[STORAGE AND STABILITY]

Storage: Avoid repeated freeze/thaw cycles.

Store at 4°C for frequent use.

Aliquot and store at -20°C for 12 months.

Stability Test: The thermal stability is described by the loss rate. The loss rate was determined by accelerated thermal degradation test, that is, incubate the protein at 37°C for 48h, and no

obvious degradation and precipitation were observed. The loss rate is less than 5% within the expiration date under appropriate storage condition.

[IDENTIFICATION]

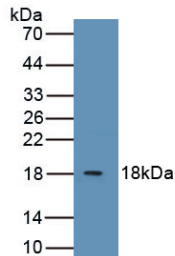


Figure. Western Blot; Sample:
Recombinant aFP, Human.

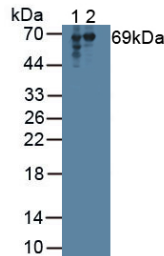


Figure. Western Blot; Sample:
Line1:Human Liver Tissue.
Line2:Human Lung Tissue.

[IMPORTANT NOTE]

The kit is designed for research use only, we will not be responsible for any issue if the kit was used in clinical diagnostic or any other procedures.