

**MAA259Hu21**

**Monoclonal Antibody to Annexin V (ANXA5)**

**Organism Species: *Homo sapiens* (Human)**

***Instruction manual***

FOR RESEARCH USE ONLY

NOT FOR USE IN CLINICAL DIAGNOSTIC PROCEDURES

---

12th Edition (Revised in Aug, 2016)

**[ PROPERTIES ]**

**Source:** Monoclonal antibody preparation

**Host:** Mouse

**Antibody isotype:** IgG1 Kappa

**Purification:** Protein A + Protein G affinity chromatography

**Clone number:** C10-1

**Traits:** Liquid

**Concentration:** 1mg/ml

**UOM:** 100µl

**Cross Reactivity:** Rabbit;Canine;Porcine;Bovine;Caprine;Ovine

**Applications:** WB; IHC; ICC; IP.

**[ IMMUNOGEN ]**

**Immunogen:** Recombinant ANXA5 (Met1~Asp320) expressed in *E.coli*

**Accession No.:** RPA259Hu01

**[ APPLICATIONS ]**

Western blotting: 0.003-2µg/mL

Immunohistochemistry: 5-20µg/mL

Immunocytochemistry: 5-20µg/mL

Optimal working dilutions must be determined by end user.

**[ FORMULATION ]**

**Form & Buffer:** Supplied as solution form in 0.01M PBS, pH7.4, containing 0.05% Proclin-300, 50% glycerol.

**[ STORAGE AND STABILITY ]**

**Storage:** Avoid repeated freeze/thaw cycles.

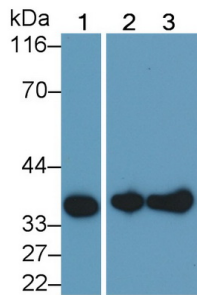
Store at 4°C for frequent use.

Aliquot and store at -20°C for 24 months.

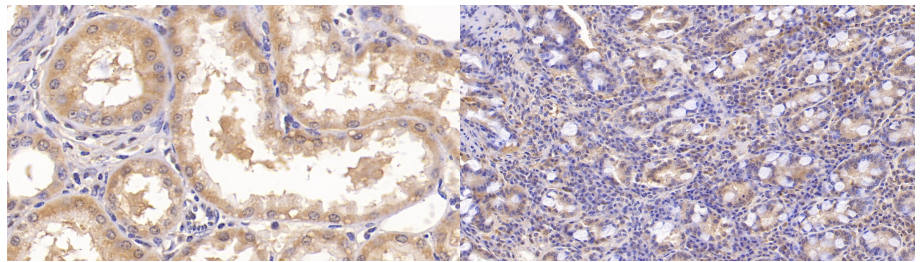
**Stability Test:** The thermal stability is described by the loss rate. The loss rate was determined

by accelerated thermal degradation test, that is, incubate the protein at 37°C for 48h, and no obvious degradation and precipitation were observed. The loss rate is less than 5% within the expiration date under appropriate storage condition.

**[ IDENTIFICATION ]**

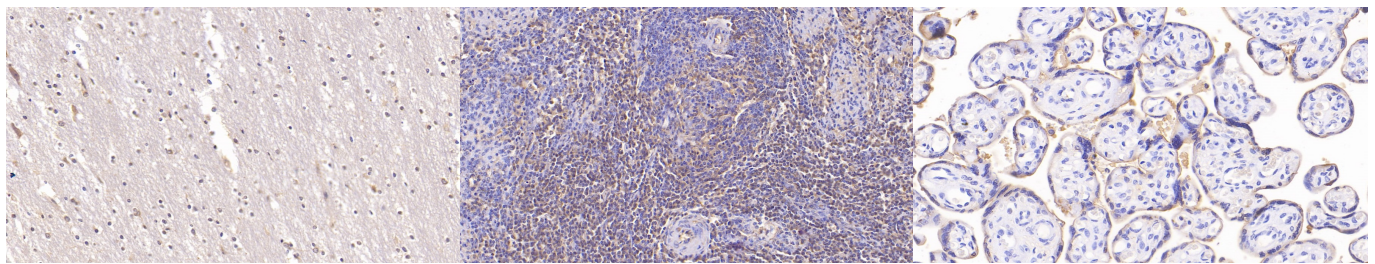


Western Blot; Sample: Lane1: Human Placenta lysate; Lane2: Hela cell lysate; Lane3: HepG2 cell lysate Primary Ab: 0.2?g/ml Mouse Anti-Human ANXA5 Antibody Second Ab: 0.2µg/mL HRP-Linked Caprine Anti-Mouse IgG Polyclonal Antibody (Catalog: SAA544Mu19)



DAB staining on IHC-P; Sample: Human Kidney Tissue; Primary Ab: 20µg/ml Mouse Anti-Human ANXA5 Antibody Second Ab: 2µg/mL HRP-Linked Caprine Anti-Mouse IgG Polyclonal Antibody (Catalog: SAA544Mu19)

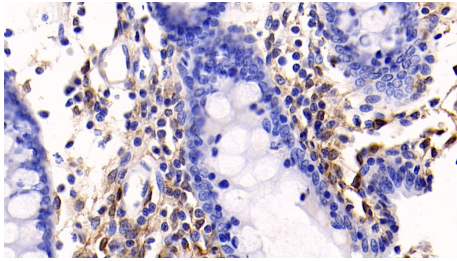
DAB staining on IHC-P; Sample: Human Small intestine Tissue; Primary Ab: 20µg/ml Mouse Anti-Human ANXA5 Antibody Second Ab: 2µg/mL HRP-Linked Caprine Anti-Mouse IgG Polyclonal Antibody (Catalog: SAA544Mu19)



DAB staining on IHC-P; Sample: Human Cerebrum Tissue; Primary Ab: 20µg/ml Mouse Anti-Human ANXA5 Antibody Second Ab: 2µg/mL HRP-Linked Caprine Anti-Mouse IgG Polyclonal Antibody (Catalog: SAA544Mu19)

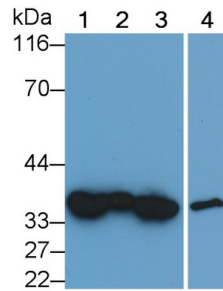
DAB staining on IHC-P; Sample: Human Spleen Tissue; Primary Ab: 20µg/ml Mouse Anti-Human ANXA5 Antibody Second Ab: 2µg/mL HRP-Linked Caprine Anti-Mouse IgG Polyclonal Antibody (Catalog: SAA544Mu19)

DAB staining on IHC-P; Sample: Human Placenta Tissue; Primary Ab: 20µg/ml Mouse Anti-Human ANXA5 Antibody Second Ab: 2µg/mL HRP-Linked Caprine Anti-Mouse IgG Polyclonal Antibody (Catalog: SAA544Mu19)

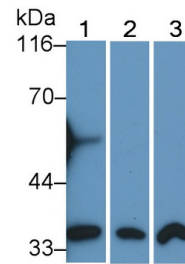


DAB staining on IHC-P;

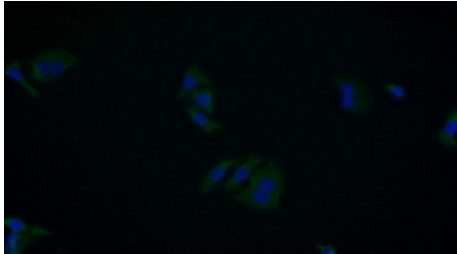
Sample: Human Colon Tissue;  
 Primary Ab: 20µg/ml Mouse Anti-Human ANXA5 Antibody  
 Second Ab: 2µg/mL HRP-Linked Caprine Anti-Mouse IgG Polyclonal Antibody  
 (Catalog: SAA544Mu19)



Western Blot; Sample: Lane1: Human Placenta lysate; Lane2: HeLa cell lysate; Lung lysate; Lane2: Rabbit Lung lysate; Lane3: Porcine Lung lysate; Lane4: Bovine Lung lysate  
 Primary Ab: 0.01µg/ml Mouse Anti-Human ANXA5 Antibody  
 Second Ab: 0.2µg/mL HRP-Linked Caprine Anti-Mouse IgG Polyclonal Antibody  
 (Catalog: SAA544Mu19)



Western Blot; Sample: Lane1: Canine Placenta lysate; Lane2: Rabbit Lung lysate; Lane3: Caprine Lung lysate  
 Primary Ab: 0.003µg/ml Mouse Anti-Human ANXA5 Antibody  
 Second Ab: 0.2µg/mL HRP-Linked Caprine Anti-Mouse IgG Polyclonal Antibody  
 (Catalog: SAA544Mu19)



FITC staining on IF;

Samples: Human HeLa cell;  
 Primary Ab: 20µg/ml Mouse Anti-Human ANXA5 Antibody  
 Second Ab: 5µg/ml FITC-Linked Caprine Anti-Mouse IgG Polyclonal Antibody  
 (Catalog: SAA544Mu18)

**[ IMPORTANT NOTE ]**

The kit is designed for research use only, we will not be responsible for any issue if the kit was

used in clinical diagnostic or any other procedures.