

MAA909Hu22

Monoclonal Antibody to Ceruloplasmin (CP)

Organism Species: *Homo sapiens (Human)*

Instruction manual

FOR RESEARCH USE ONLY

NOT FOR USE IN CLINICAL DIAGNOSTIC PROCEDURES

13th Edition (Revised in Aug, 2023)

[PROPERTIES]

Source: Monoclonal antibody preparation

Host: Mouse

Antibody isotype: IgG2b Kappa

Purification: Protein A + Protein G affinity chromatography

Clone number: C1

Traits: Liquid

Concentration: 1mg/mL

UOM: 100µL

Cross Reactivity: N/A

Applications: WB; IHC

[IMMUNOGEN]

Immunogen: Recombinant Ceruloplasmin (Asp789~Gly1065) expressed in *E.coli*

Accession No.: RPA909Hu01

[APPLICATIONS]

Western blotting: 0.01-3µg/mL;

Immunohistochemistry: 5-20µg/mL;

Optimal working dilutions must be determined by end user.

[FORMULATION]

Form & Buffer: Supplied as solution form in 0.01M PBS, pH7.4, containing 0.05% Proclin-300, 50% glycerol.

[STORAGE AND STABILITY]

Storage: Avoid repeated freeze/thaw cycles.

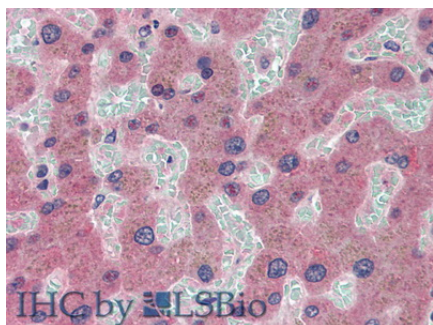
Store at 4°C for frequent use.

Aliquot and store at -20°C for 24 months.

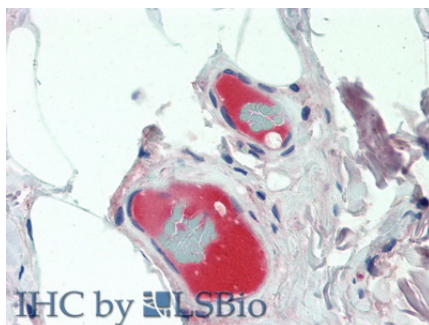
Stability Test: The thermal stability is described by the loss rate. The loss rate was determined by accelerated thermal degradation test, that is, incubate the protein at 37°C for 48h, and no

obvious degradation and precipitation were observed. The loss rate is less than 5% within the expiration date under appropriate storage condition.

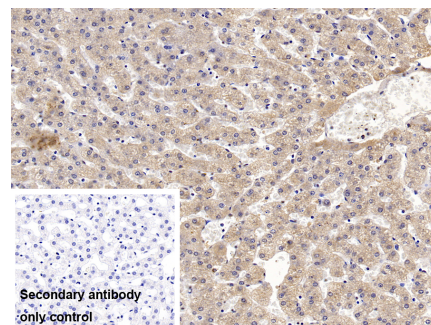
[IDENTIFICATION]



Vector Red staining on IHC-P; Sample:
Human Liver Tissue; Primary Ab:
20µg/ml Mouse Anti-Human CP
Antibody Second Ab: 2µg/mL HRP-
Linked Caprine Anti-Mouse IgG
Monoclonal Antibody

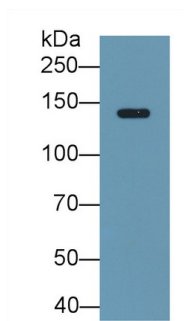


Vector Red staining on IHC-P;
Sample: Human Small Intestine Tissue;
Primary Ab: 20µg/ml Mouse Anti-
Human CP Antibody
Second Ab: 2µg/mL HRP-Linked
Caprine Anti-Mouse IgG Monoclonal
Antibody



DAB staining on IHC-P;
Sample: Porcine Liver Tissue;
Primary Ab: 10µg/ml Mouse Anti-
Human CP Antibody
Second Ab: 2µg/mL HRP-Linked
Caprine Anti-Mouse IgG Polyclonal
Antibody
(Catalog: SAA544Mu19)

Secondary antibody only control: Used
PBS instead of primary antibody ,
Second Ab: 2µg/mL HRP-Linked
Caprine Anti-Mouse IgG Polyclonal
Antibody
(Catalog: SAA544Mu19)



Western Blot; Sample: Human Serum
Primary Ab: 3µg/ml Mouse Anti-Human
Ceruloplasmin Antibody

Second Ab: 0.2µg/mL HRP-Linked

Caprine Anti-Mouse IgG Polyclonal

Antibody

(Catalog: SAA544Mu19) Selected

[IMPORTANT NOTE]

The kit is designed for research use only, we will not be responsible for any issue if the kit was used in clinical diagnostic or any other procedures.