

**MAA685Hu22**

**Monoclonal Antibody to Cluster Of Differentiation 14 (CD14)**

**Organism Species: *Homo sapiens (Human)***

***Instruction manual***

**FOR RESEARCH USE ONLY**

**NOT FOR USE IN CLINICAL DIAGNOSTIC PROCEDURES**

---

13th Edition (Revised in Aug, 2023)

## **[ PROPERTIES ]**

**Source:** Monoclonal antibody preparation

**Host:** Mouse

**Antibody isotype:** IgG1 Kappa

**Purification:** Protein A + Protein G affinity chromatography

**Clone number:** C8

**Traits:** Liquid

**Concentration:** 1mg/ml

**UOM:** 100µl

**Cross Reactivity:** N/A

**Applications:** WB; IHC; ICC; IP.

## **[ IMMUNOGEN ]**

**Immunogen:** Recombinant CD14 (Thr20~Leu368) expressed in *E.coli*

**Accession No.:** RPA685Hu02

## **[ APPLICATIONS ]**

Western blotting: 0.01-2µg/mL;

Immunohistochemistry: 5-20µg/mL;

Immunocytochemistry: 5-20µg/mL;

Optimal working dilutions must be determined by end user.

## **[ FORMULATION ]**

**Form & Buffer:** Supplied as solution form in 0.01M PBS, pH7.4, containing 0.05% Proclin-300, 50% glycerol.

## **[ STORAGE AND STABILITY ]**

**Storage:** Avoid repeated freeze/thaw cycles.

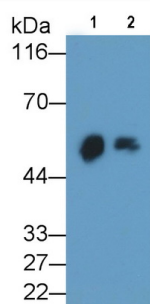
Store at 4°C for frequent use.

Aliquot and store at -20°C for 24 months.

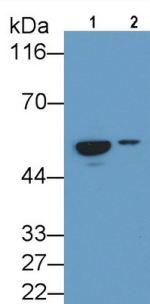
**Stability Test:** The thermal stability is described by the loss rate. The loss rate was determined

by accelerated thermal degradation test, that is, incubate the protein at 37°C for 48h, and no obvious degradation and precipitation were observed. The loss rate is less than 5% within the expiration date under appropriate storage condition.

### [ IDENTIFICATION ]



Western Blot; Sample: Human Urine  
 Primary Ab: 1µg/ml Mouse Anti-Human  
 CD14 Antibody Second Ab: 0.2µg/mL  
 HRP-Linked Caprine Anti-Mouse IgG  
 Polyclonal Antibody (Catalog:  
 SAA544Mu19)



Western Blot; Sample: Lane1: Human  
 Placenta lysate; Lane2: Human Milk  
 Primary Ab: 0.4µg/ml Mouse Anti-  
 Human CD14 Antibody  
 Second Ab: 0.2µg/mL HRP-Linked  
 Caprine Anti-Mouse IgG Polyclonal  
 Antibody  
 (Catalog: SAA544Mu19)

### [ IMPORTANT NOTE ]

The kit is designed for research use only, we will not be responsible for any issue if the kit was used in clinical diagnostic or any other procedures.