

MAC030Ra21

Monoclonal Antibody to Creatine Kinase, Brain (CKB)

Organism Species: Rattus norvegicus (Rat)

Instruction manual

FOR IN VITRO USE AND RESEARCH USE ONLY
NOT FOR USE IN CLINICAL DIAGNOSTIC PROCEDURES

9th Edition (Revised in Jul, 2013)

[PRODUCT INFORMATION]

Immunogen: CKB, Rat

Clonality: Monoclonal

Clone number: C5

Host: Mouse

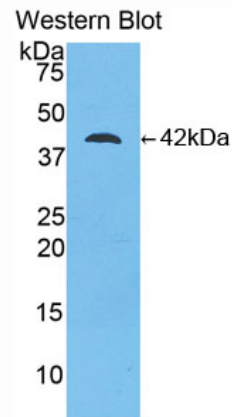
Immunoglobulin Type: IgG

Purification: Affinity Chromatography.

Applications: WB, ICC, IHC-P, IHC-F, ELISA

Concentration: 500µg/mL

UOM: 200µg



Sample: Recombinant CKB, Rat

[IMMUNOGEN INFORMATION]

Immunogen: Recombinant CKB (Lys11~Leu367) expressed in *E.coli*.

Accession No.: RPC030Ra01

Sequence: The target protein is fused with N-terminal His-Tag and its sequence is listed below.

MGHHHHHHSGSEF-KLRFPAEDEF PDLSSHNNHM AKVLTPELYA ELRAKCTPSG
FTLDDAIQTG VDNPGHPYIM TVGAVAGDEE SYDVFKDLFD PIEDRHGGY QPSDEHKTDL
NPDNLQGGDD LDPNYVLSSR VRTGRSIRGF CLPPHCSRGE RRAIEKLAVE ALSSLGDLS
GRYYALKSMT EAEQQQLIDD HFLFDKPVSP LLLASGMARD WPDARGIWHN DNKTFLVWIN
EEDHLRVISM QKGGNMKEVF TRFCTGLTQI ETLFKSKNYE FMWNPHLGYI LTCPSNLGTG
LRAGVHIKLP HLGKHEKFSE VLKRLRLQKR GTGGVDTAAV GGVFDVSNAD RLGFSSEVELV
QMVVVDGVKLL IEMEQR

[ANTIBODY SPECIFICITY]

The antibody is a mouse monoclonal antibody raised against CKB. It has been selected for its ability to recognize CKB in immunohistochemical staining and western blotting.

[APPLICATIONS]

Western blotting: 1:100-400

Immunocytochemistry in formalin fixed cells: 1:100-500

Immunohistochemistry in formalin fixed frozen section: 1:100-500

Immunohistochemistry in paraffin section: 1:50-200

Enzyme-linked Immunosorbent Assay: 1:100-200

Optimal working dilutions must be determined by end user.

[CONTENTS]

Form & Buffer: Supplied as solution form in PBS, pH7.4, containing 0.02% NaN₃, 50% glycerol.

[STORAGE]

Store at 4°C for frequent use. Stored at -20°C to -80°C in a manual defrost freezer for one year without detectable loss of activity. Avoid repeated freeze-thaw cycles.