

MAA109Hu28

Monoclonal Antibody to Creatine Kinase, Muscle (CKM)

Organism Species: *Homo sapiens* (Human)

Instruction manual

FOR RESEARCH USE ONLY

NOT FOR USE IN CLINICAL DIAGNOSTIC PROCEDURES

13th Edition (Revised in Aug, 2023)

[PROPERTIES]

Source: Monoclonal antibody preparation

Host: Mouse

Antibody isotype: IgG2b Kappa

Purification: Protein A + Protein G affinity chromatography

Clone number: C10

Traits: Liquid

Concentration: 1mg/mL

UOM: 100µL

Cross Reactivity: Mouse;Rabbit

Applications: WB; ICC/IF; FCM

[IMMUNOGEN]

Immunogen: Recombinant CKM (Lys11~Leu367) expressed in *E.coli*

Accession No.: RPA109Hu01

[APPLICATIONS]

Western blotting: 0.01-2µg/mL;

Immunofluorescence: 5-20µg/mL;

Flow cytometry: 10µg/mL;

Optimal working dilutions must be determined by end user.

[FORMULATION]

Form & Buffer: Supplied as solution form in PBS, pH7.4, containing 0.02% NaN₃, 50% glycerol.

[STORAGE AND STABILITY]

Storage: Avoid repeated freeze/thaw cycles.

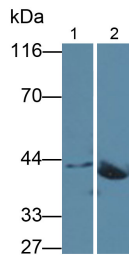
Store at 4°C for frequent use.

Aliquot and store at -20°C for 24 months.

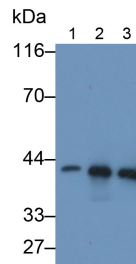
Stability Test: The thermal stability is described by the loss rate. The loss rate was determined

by accelerated thermal degradation test, that is, incubate the protein at 37°C for 48h, and no obvious degradation and precipitation were observed. The loss rate is less than 5% within the expiration date under appropriate storage condition.

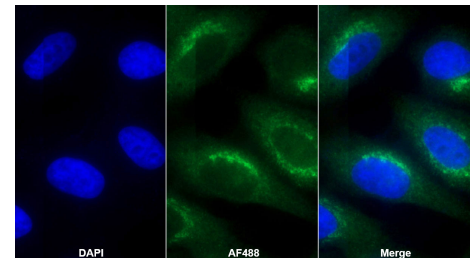
[IDENTIFICATION]



Western Blot; Samples: Lane1: Mouse Heart lysate; Lane2: Mouse Skeletal muscle lysate; Primary Ab: 5µg/ml Mouse Anti-Human CKM Antibody
Second Ab: 0.2?g/ml HRP-Linked Caprine Anti-Mouse IgG Polyclonal Antibody (Catalog: SAA544Mu19)

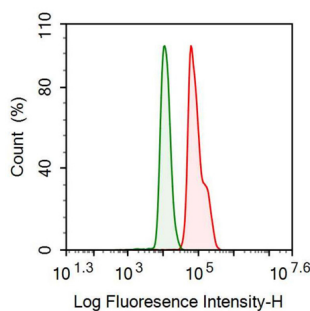


Western Blot; Samples: Lane1: Rabbit Cerebrum lysate; Lane2: Rabbit Skeletal muscle lysate; Lane3: Rabbit Heart lysate;
Primary Ab: 0.5µg/ml Mouse Anti-Human CKM Antibody
Second Ab: 0.2?g/ml HRP-Linked Caprine Anti-Mouse IgG Polyclonal Antibody (Catalog: SAA544Mu19)



AF488 staining on IF;

Sample: HepG2 cell
Primary Ab: 20µg/ml Mouse Anti-Human CKM Antibody
Second Ab: 2?g/ml AF488-Linked Caprine Anti-Mouse IgG Polyclonal Antibody (Catalog: SAA544Mu11)



Human THP1 cell line was fixed with 2% paraformaldehyde (10 min) , permeabilised with 0.1% BSA-Triton X-100, then stained with 10µg/ml mouse Anti-human CKM Monoclonal Antibody (Catalog MAA109Hu28, red histogram)

or Isotype control antibody (Catalog
IS067-Mu03, green histogram),
followed by 1µg/ml FITC-conjugated
Anti-mouse IgG Secondary Antibody
(Catalog SAA544Mu18).

[IMPORTANT NOTE]

The kit is designed for research use only, we will not be responsible for any issue if the kit was used in clinical diagnostic or any other procedures.