

**MAA594Hu21**

**Monoclonal Antibody to Cytochrome C (CYCS)**

**Organism Species: *Homo sapiens (Human)***

***Instruction manual***

FOR RESEARCH USE ONLY

NOT FOR USE IN CLINICAL DIAGNOSTIC PROCEDURES

---

13th Edition (Revised in Aug, 2023)

**[ PROPERTIES ]**

**Source:** Monoclonal antibody preparation

**Host:** Mouse

**Antibody isotype:** IgG2a Kappa

**Purification:** Protein A + Protein G affinity chromatography

**Clone number:** C2

**Traits:** Liquid

**Concentration:** 1mg/mL

**UOM:** 100µL

**Cross Reactivity:** Mouse; Rat; Porcine;Cavia;Caprine;Canine;Gallus.

**Applications:** WB; IHC; ICC/IF

**[ IMMUNOGEN ]**

**Immunogen:** Recombinant CYCS (Glu5~Lys100) expressed in *E.coli*

**Accession No.:** RPA594Hu01

**[ APPLICATIONS ]**

Western blotting: 0.01-2µg/mL;

Immunohistochemistry: 5-30µg/mL;

Immunocytochemistry: 5-30µg/mL;

Optimal working dilutions must be determined by end user.

**[ FORMULATION ]**

**Form & Buffer:** Supplied as solution form in PBS, pH7.4, containing 0.02% NaN<sub>3</sub>, 50% glycerol.

**[ STORAGE AND STABILITY ]**

**Storage:** Avoid repeated freeze/thaw cycles.

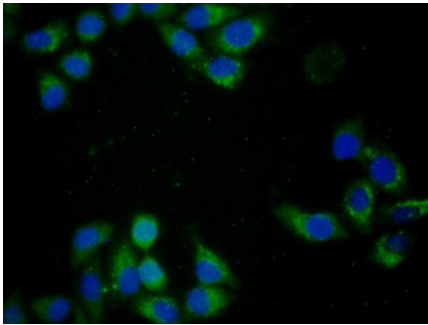
Store at 4°C for frequent use.

Aliquot and store at -20°C for 24 months.

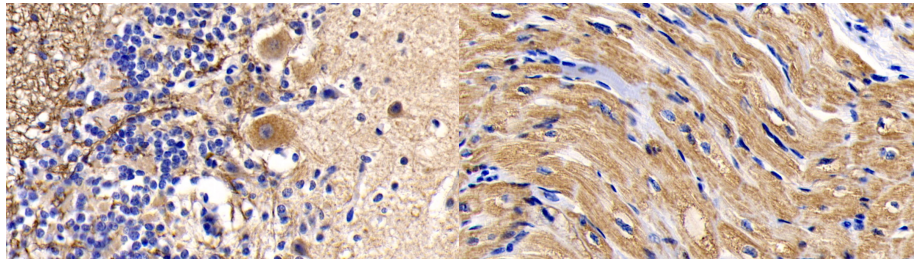
**Stability Test:** The thermal stability is described by the loss rate. The loss rate was determined

by accelerated thermal degradation test, that is, incubate the protein at 37°C for 48h, and no obvious degradation and precipitation were observed. The loss rate is less than 5% within the expiration date under appropriate storage condition.

**[ IDENTIFICATION ]**

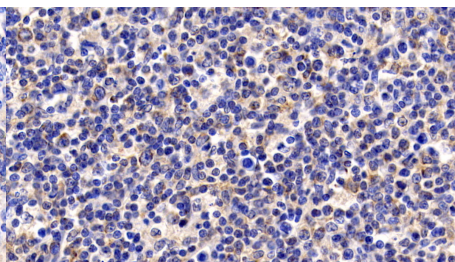
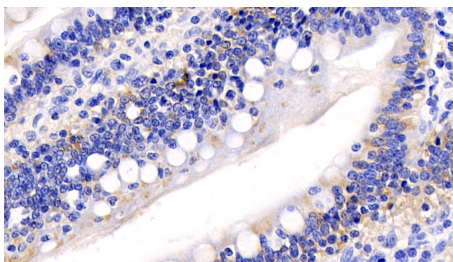


FITC staining on IF; Samples: Human MCF7 Cells; Primary Ab: 40µg/ml Mouse Anti-Human CYCS Antibody  
Second Ab: 1µg/ml FITC-Linked Caprine Anti-Mouse IgG Polyclonal Antibody (Catalog: SAA544Mu18)



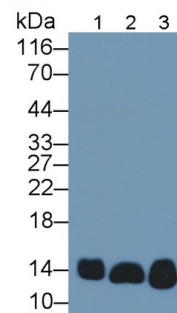
DAB staining on IHC-P;  
Sample: Human Cerebellum Tissue;  
Primary Ab: 30ug/ml Mouse Anti-Human CYCS Antibody  
Second Ab: 2µg/mL HRP-Linked Caprine Anti-Mouse IgG Polyclonal Antibody  
(Catalog: SAA544Mu19)

DAB staining on IHC-P;  
Sample: Human Cardiac Muscle Tissue;  
Primary Ab: 30ug/ml Mouse Anti-Human CYCS Antibody  
Second Ab: 2µg/mL HRP-Linked Caprine Anti-Mouse IgG Polyclonal Antibody  
(Catalog: SAA544Mu19)

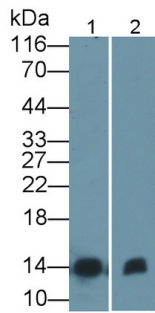


DAB staining on IHC-P;  
Sample: Human Small intestine Tissue;  
Primary Ab: 30ug/ml Mouse Anti-Human CYCS Antibody  
Second Ab: 2µg/mL HRP-Linked Caprine Anti-Mouse IgG Polyclonal Antibody  
(Catalog: SAA544Mu19)

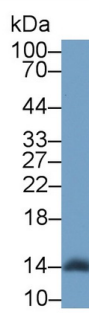
DAB staining on IHC-P;  
Sample: Human Lymph node Tissue;  
Primary Ab: 30ug/ml Mouse Anti-Human CYCS Antibody  
Second Ab: 2µg/mL HRP-Linked Caprine Anti-Mouse IgG Polyclonal Antibody  
(Catalog: SAA544Mu19)



Western Blot; Sample: Lane1: 293T cell lysate; Lane2: Rat Liver lysate; Lane3: Rat Heart lysate  
Primary Ab: 2ug/ml Mouse Anti-Human CYCS Antibody  
Second Ab: 0.2µg/mL HRP-Linked Caprine Anti-Mouse IgG Polyclonal Antibody

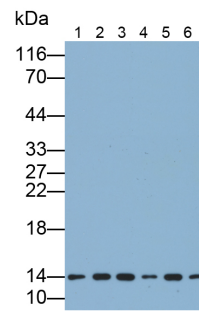


Western Blot; Sample: Lane1: Jurkat cell lysate; Lane2: Mouse Heart lysate  
 Primary Ab: 0.2ug/ml Mouse Anti-Human CYCS Antibody  
 Second Ab: 0.2µg/mL HRP-Linked Caprine Anti-Mouse IgG Polyclonal Antibody  
 (Catalog: SAA544Mu19)

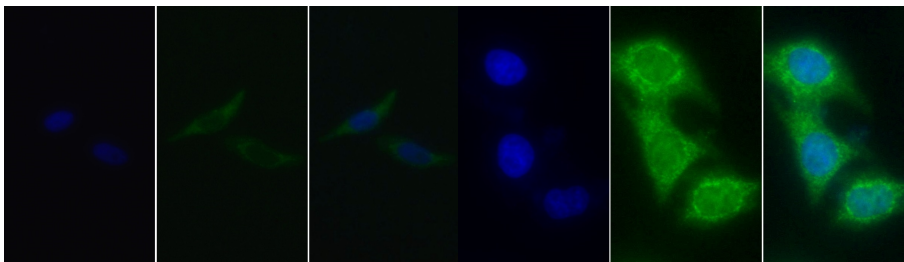


Western Blot; Sample: Rat Liver lysate;  
 Primary Ab: 2µg/ml Mouse Anti-Human CYCS Antibody  
 Second Ab: 0.2µg/mL HRP-Linked Caprine Anti-Mouse IgG Polyclonal Antibody  
 (Catalog: SAA544Mu19)

(Catalog: SAA544Mu19)



Western Blot; Sample: Lane1: Porcine Heart lysate; Lane2: Gallus Heart lysate; Lane3: Canine Heart lysate; Lane4: Caprine Heart lysate; Lane5: Cavia Heart lysate; Lane6: Rabbit Heart lysate  
 Primary Ab: 0.2?g/ml Mouse Anti-Human CYCS Antibody  
 Second Ab: 0.2µg/mL HRP-Linked Caprine Anti-Mouse IgG Polyclonal Antibody  
 (Catalog: SAA544Mu19)



FITC staining on IF;  
 Sample: Human HepG2 cell;  
 Primary Ab: 20?g/ml Mouse Anti-Human CYCS Antibody  
 Second Ab: 5?g/ml FITC-Linked Caprine Anti-Mouse IgG Polyclonal Antibody  
 (Catalog: SAA544Mu18)

FITC staining on IF;  
 Sample: Human Hela cell;  
 Primary Ab: 30ug/ml Mouse Anti-Human CYCS Antibody  
 Second Ab: 2µg/ml FITC-Linked Caprine Anti-Mouse IgG Polyclonal Antibody  
 (Catalog: SAA544Mu18)

**[ IMPORTANT NOTE ]**

The kit is designed for research use only, we will not be responsible for any issue if the kit was used in clinical diagnostic or any other procedures.