

MAA556Hu22

Monoclonal Antibody to Cytokeratin 7 (CK7)

Organism Species: *Homo sapiens* (Human)

Instruction manual

FOR RESEARCH USE ONLY

NOT FOR USE IN CLINICAL DIAGNOSTIC PROCEDURES

13th Edition (Revised in Aug, 2023)

[PROPERTIES]

Source: Monoclonal antibody preparation

Host: Mouse

Antibody isotype: N/A

Purification: Protein A + Protein G affinity chromatography

Clone number: 15#

Traits: Liquid

Concentration: 1mg/mL

UOM: 100µL

Cross Reactivity: N/A

Applications: WB; ICC/IF

[IMMUNOGEN]

Immunogen: Recombinant CK7 (Glu91~Lys394) expressed in *E.coli*

Accession No.: RPA556Hu01

[APPLICATIONS]

Western blotting: 0.01-2µg/mL;

Immunofluorescence: 5-30µg/mL;

Optimal working dilutions must be determined by end user.

[FORMULATION]

Form & Buffer: Supplied as solution form in 0.01M PBS, pH7.4, containing 0.05% Proclin-300, 50% glycerol.

[STORAGE AND STABILITY]

Storage: Avoid repeated freeze/thaw cycles.

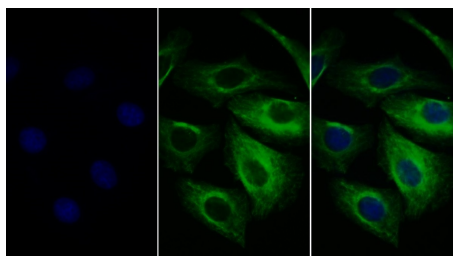
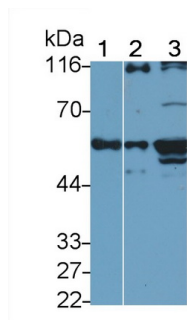
Store at 4°C for frequent use.

Aliquot and store at -20°C for 24 months.

Stability Test: The thermal stability is described by the loss rate. The loss rate was determined by accelerated thermal degradation test, that is, incubate the protein at 37°C for 48h, and no

obvious degradation and precipitation were observed. The loss rate is less than 5% within the expiration date under appropriate storage condition.

[IDENTIFICATION]



FITC staining on IF; Sample: Human

Western Blot; Sample: Lane1: Human
Lung lysate; Lane2: A549 cell lysate;
Lane3: HeLa cell lysate Primary Ab:
0.2 μ g/ml Mouse Anti-Human CK7
Antibody Second Ab: 0.2 μ g/mL HRP-
Linked Caprine Anti-Mouse IgG
Polyclonal Antibody (Catalog:
SAA544Mu19)

HeLa cell; Primary Ab: 30 μ g/ml Mouse
Anti-Human CK7 Antibody Second Ab:
2 μ g/ml FITC-Linked Caprine Anti-
Mouse IgG Polyclonal Antibody
(Catalog: SAA544Mu18)

[IMPORTANT NOTE]

The kit is designed for research use only, we will not be responsible for any issue if the kit was used in clinical diagnostic or any other procedures.