

**MAX159Ge22**

**Monoclonal Antibody to FLAG Octapeptide (FLAG)**

**Organism Species: *Pan-species (General)***

***Instruction manual***

FOR RESEARCH USE ONLY

NOT FOR USE IN CLINICAL DIAGNOSTIC PROCEDURES

---

13th Edition (Revised in Aug, 2023)

**[ PROPERTIES ]**

**Source:** Monoclonal antibody preparation

**Host:** Mouse

**Antibody isotype:** IgG1 Kappa

**Purification:** Protein A + Protein G affinity chromatography

**Clone number:** D4

**Traits:** Liquid

**Concentration:** 0.66mg/mL

**UOM:** 100µg(152µL)

**Cross Reactivity:** N/A

**Applications:** ELISA

**[ IMMUNOGEN ]**

**Immunogen:** Synthetic Peptide, FLAG conjugated to OVA.Target peptide sequence: DYKDDDDK.

**Accession No.:** CPX159Ge21

**[ APPLICATIONS ]**

Enzyme-Linked Immune Immunosorbent: 0.09µg/mL;

Optimal working dilutions must be determined by end user.

**[ FORMULATION ]**

**Form & Buffer:** Supplied as solution form in 0.01M PBS, pH7.4, containing 0.05% Proclin-300, 50% glycerol.

**[ STORAGE AND STABILITY ]**

**Storage:** Avoid repeated freeze/thaw cycles.

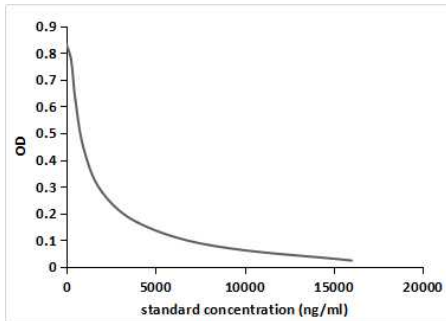
Store at 4°C for frequent use.

Aliquot and store at -20°C for 24 months.

**Stability Test:** The thermal stability is described by the loss rate. The loss rate was determined by accelerated thermal degradation test, that is, incubate the protein at 37°C for 48h, and no

obvious degradation and precipitation were observed. The loss rate is less than 5% within the expiration date under appropriate storage condition.

### [ IDENTIFICATION ]



Competitive inhibition ELISA;

Coated protein: FLAG conjugated to

BSA (Catalog:CPX159Ge11);

Standard:Series Diluted FLAG;

Primary Ab: 0.09 $\mu$ g/mL Mouse Anti

FLAG Antibody;

Second Ab: 2 $\mu$ g/mL HRP-Linked

Caprine Anti-mouse IgG

PolyclonalAntibody (Catalog:

SAA544Mu19)

IC50=1000ng/mL

### [ IMPORTANT NOTE ]

The kit is designed for research use only, we will not be responsible for any issue if the kit was used in clinical diagnostic or any other procedures.