

MAB932Hu22

Monoclonal Antibody to Glyceraldehyde-3-Phosphate Dehydrogenase (GAPDH)

Organism Species: *Homo sapiens (Human)*

Instruction manual

FOR RESEARCH USE ONLY

NOT FOR USE IN CLINICAL DIAGNOSTIC PROCEDURES

13th Edition (Revised in Aug, 2023)

[PROPERTIES]

Source: Monoclonal antibody preparation

Host: Mouse

Antibody isotype: N/A

Purification: Protein A + Protein G affinity chromatography

Clone number: 3-2#

Traits: Liquid

Concentration: 1mg/mL

UOM: 100µL

Cross Reactivity: Mouse;Rat

Applications: WB; IHC; ICC; IP.

[IMMUNOGEN]

Immunogen: Recombinant GAPDH (Gly2~Ser148) expressed in *E.coli*

Accession No.: RPB932Hu01

[APPLICATIONS]

Western blotting: 0.01-5µg/mL;

Immunohistochemistry: 5-30µg/mL;

Immunocytochemistry: 5-20µg/mL;

Optimal working dilutions must be determined by end user.

[FORMULATION]

Form & Buffer: Supplied as solution form in PBS, pH7.4, containing 0.02% NaN₃, 50% glycerol.

[STORAGE AND STABILITY]

Storage: Avoid repeated freeze/thaw cycles.

Store at 4°C for frequent use.

Aliquot and store at -20°C for 24 months.

Stability Test: The thermal stability is described by the loss rate. The loss rate was determined

by accelerated thermal degradation test, that is, incubate the protein at 37°C for 48h, and no obvious degradation and precipitation were observed. The loss rate is less than 5% within the expiration date under appropriate storage condition.

[IDENTIFICATION]

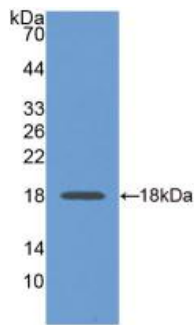
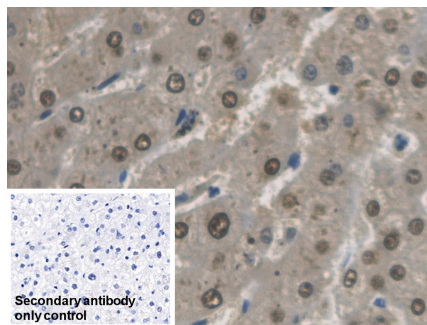
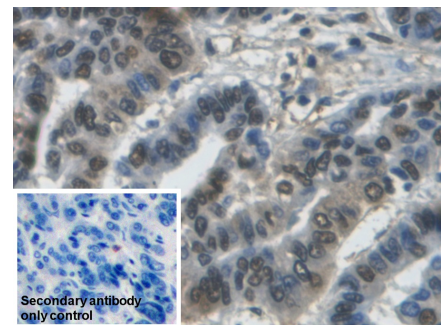


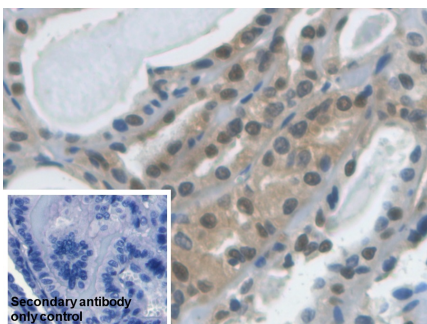
Figure. Western Blot; Sample: Recombinant GAPDH, Human.



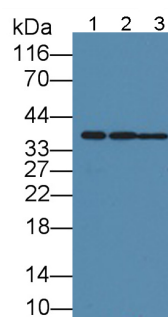
DAB staining on IHC-P; Sample: Human Liver Tissue Primary Ab: 30µg/ml Mouse Anti-Human GAPDH Antibody Control: Used PBS instead of primary antibody Second Ab: 2?g/ml HRP-Linked Caprine Anti-Mouse IgG Polyclonal Antibody (Catalog: SAA544Mu19)



DAB staining on IHC-P; Sample: Human Liver cancer Tissue Primary Ab: 30µg/ml Mouse Anti-Human GAPDH Antibody Control: Used PBS instead of primary antibody Second Ab: 2?g/ml HRP-Linked Caprine Anti-Mouse IgG Polyclonal Antibody (Catalog: SAA544Mu19)



DAB staining on IHC-P; Sample: Human Thyroid cancer Tissue Primary Ab: 30µg/ml Mouse Anti-Human GAPDH Antibody Control: Used PBS instead of primary antibody



Western Blot; Samples: Lane1: Human Liver lysate; Lane2: Rat Liver lysate; Lane3: Mouse Liver lysate; Primary Ab: 1µg/ml Mouse Anti-Human GAPDH Antibody Second Ab: 0.2?g/ml HRP-Linked

Second Ab: 2?g/ml HRP-Linked	Caprine Anti-Mouse IgG Polyclonal
Caprine Anti-Mouse IgG Polyclonal	Antibody
Antibody	(Catalog: SAA544Mu19)
(Catalog: SAA544Mu19)	

[IMPORTANT NOTE]

The kit is designed for research use only, we will not be responsible for any issue if the kit was used in clinical diagnostic or any other procedures.