

MAB979Hu26**Monoclonal Antibody to Hepcidin (Hepc)**
Organism Species: Homo sapiens (Human)***Instruction manual***

FOR IN VITRO USE AND RESEARCH USE ONLY
NOT FOR USE IN CLINICAL DIAGNOSTIC PROCEDURES

10th Edition (Revised in Jan, 2014)

[PRODUCT INFORMATION]

Immunogen: Hepc, Human**Clonality:** Monoclonal**Clone number:** C6**Host:** Mouse**Immunoglobulin Type:** IgG**Purification:** Affinity Chromatography.**Applications:** WB, ICC, IHC-P, IHC-F, ELISA**Concentration:** 500µg/mL**UOM:** 200µg

[IMMUNOGEN INFORMATION]

Immunogen: Recombinant Hepc (Ser25~Thr84) with two Tags, His-tag and Fc-tag expressed in 293F cell.**Accession No.:** RPB979Hu61

[ANTIBODY SPECIFICITY]

The antibody is a mouse monoclonal antibody raised against Hepc. It has been selected for its ability to recognize Hepc in immunohistochemical staining and western blotting.

[APPLICATIONS]

Western blotting: 1:100-400

Immunocytochemistry in formalin fixed cells: 1:100-500

Immunohistochemistry in formalin fixed frozen section: 1:100-500

Immunohistochemistry in paraffin section: 1:50-200

Enzyme-linked Immunosorbent Assay: 1:100-200

Optimal working dilutions must be determined by end user.

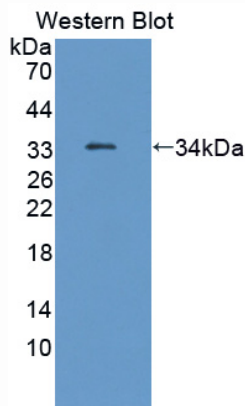
[**CONTENTS**]

Form & Buffer: Supplied as solution form in PBS, pH7.4, containing 0.02% NaN₃, 50% glycerol.

[**STORAGE**]

Store at 4°C for frequent use. Stored at -20°C to -80°C in a manual defrost freezer for one year without detectable loss of activity. Avoid repeated freeze-thaw cycles.

[**IMAGES**]



Used in Western Blot, Sample:
Recombinant Hepc, Human