

MAA395Hu28

Monoclonal Antibody to Inhibin A (INHA)

Organism Species: *Homo sapiens (Human)*

Instruction manual

FOR RESEARCH USE ONLY

NOT FOR USE IN CLINICAL DIAGNOSTIC PROCEDURES

12th Edition (Revised in Aug, 2016)

[PROPERTIES]

Source: Monoclonal antibody preparation

Host: Mouse

Antibody isotype: IgG2a Kappa

Purification: Protein A + Protein G affinity chromatography

Clone number: C1

Traits: Liquid

Concentration: 1mg/ml

UOM: 50µg(50µl)

Cross Reactivity: N/A

Applications: WB; IHC; ICC; IP.

[IMMUNOGEN]

Immunogen: Recombinant INHA (Ala25~Cys363) expressed in *E.coli*

Accession No.: RPA395Hu02

[APPLICATIONS]

Immunohistochemistry: 5-30µg/mL

Immunocytochemistry: 5-30µg/mL

Optimal working dilutions must be determined by end user.

[FORMULATION]

Form & Buffer: Supplied as solution form in 0.01M PBS, pH7.4, containing 0.05% Proclin-300, 50% glycerol.

[STORAGE AND STABILITY]

Storage: Avoid repeated freeze/thaw cycles.

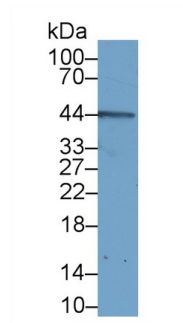
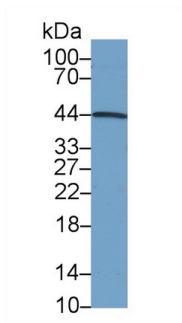
Store at 4°C for frequent use.

Aliquot and store at -20°C for 24 months.

Stability Test: The thermal stability is described by the loss rate. The loss rate was determined by accelerated thermal degradation test, that is, incubate the protein at 37°C for 48h, and no

obvious degradation and precipitation were observed. The loss rate is less than 5% within the expiration date under appropriate storage condition.

[IDENTIFICATION]



Western Blot; Sample: Human Placenta lysate; Western Blot; Sample: Human Hela cell lysate;

Primary Ab: 2µg/ml Mouse Anti-Human INHA Antibody Primary Ab: 2µg/ml Mouse Anti-Human INHA Antibody

Second Ab: 0.2µg/mL HRP-Linked Second Ab: 0.2µg/mL HRP-Linked

Caprine Anti-Mouse IgG Polyclonal Caprine Anti-Mouse IgG Polyclonal

Antibody(Catalog: SAA544Mu19) Antibody(Catalog: SAA544Mu19)

[IMPORTANT NOTE]

The kit is designed for research use only, we will not be responsible for any issue if the kit was used in clinical diagnostic or any other procedures.