

MAA064Hu22

Monoclonal Antibody to Interleukin 18 (IL18)

Organism Species: *Homo sapiens* (Human)

Instruction manual

FOR RESEARCH USE ONLY

NOT FOR USE IN CLINICAL DIAGNOSTIC PROCEDURES

13th Edition (Revised in Aug, 2023)

[PROPERTIES]

Source: Monoclonal antibody preparation

Host: Mouse

Antibody isotype: IgG1 Kappa

Purification: Protein A + Protein G affinity chromatography

Clone number: C10

Traits: Liquid

Concentration: 1mg/ml

UOM: 100ul

Cross Reactivity: Rat; Porcine.

Applications: WB,IHC

[IMMUNOGEN]

Immunogen: Recombinant IL18 (Arg94~Asp193) expressed in *E.coli*

Accession No.: RPA064Hu02

[APPLICATIONS]

Western blotting: 0.5-2µg/mL;

Immunohistochemistry: 5-20µg/mL;

Optimal working dilutions must be determined by end user.

[FORMULATION]

Form & Buffer: Supplied as solution form in 0.01M PBS, pH7.4, containing 0.05% Proclin-300, 50% glycerol.

[STORAGE AND STABILITY]

Storage: Avoid repeated freeze/thaw cycles.

Store at 4°C for frequent use.

Aliquot and store at -20°C for 24 months.

Stability Test: The thermal stability is described by the loss rate. The loss rate was determined by accelerated thermal degradation test, that is, incubate the protein at 37°C for 48h, and no

obvious degradation and precipitation were observed. The loss rate is less than 5% within the expiration date under appropriate storage condition.

[IDENTIFICATION]

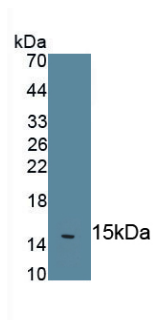
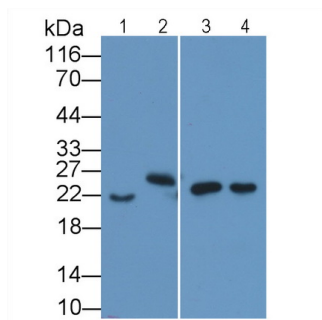
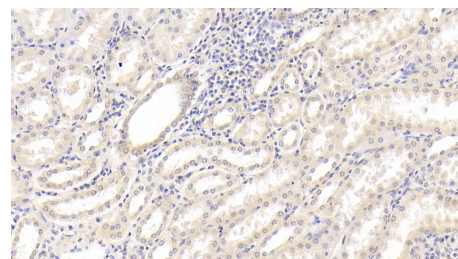


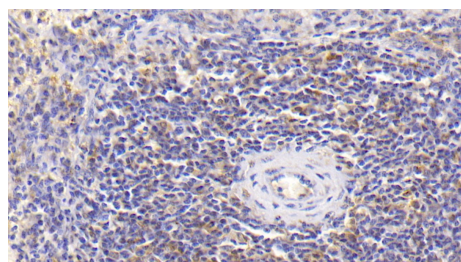
Figure. Western Blot; Sample: Recombinant IL18, Human.



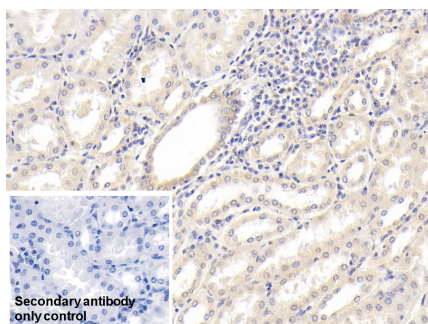
Western Blot; Sample: Lane1: HepG2 cell lysate; Lane2: Hela cell lysate; Lane3: Porcine Spleen lysate; Lane4: Rat Spleen lysate
Primary Ab: 2 μ g/ml Mouse Anti-Human IL18 Antibody
Second Ab: 0.2 μ g/mL HRP-Linked Caprine Anti-Mouse IgG Polyclonal Antibody
(Catalog: SAA544Mu19)



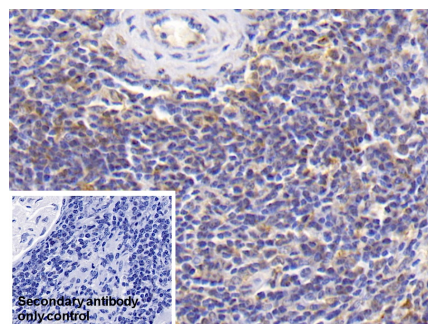
DAB staining on IHC-P;
Sample: Human Kidney Tissue;
Primary Ab: 20 μ g/ml Mouse Anti-Human IL18 Antibody
Second Ab: 2 μ g/mL HRP-Linked Caprine Anti-Mouse IgG Polyclonal Antibody
(Catalog: SAA544Mu19)



DAB staining on IHC-P;
Sample: Human Spleen Tissue;
Primary Ab: 20 μ g/ml Mouse Anti-Human IL18 Antibody
Second Ab: 2 μ g/mL HRP-Linked Caprine Anti-Mouse IgG Polyclonal Antibody
(Catalog: SAA544Mu19)



DAB staining on IHC-P;
Sample: Human Kidney Tissue
Primary Ab: 20 μ g/ml Mouse Anti-Human IL18 Antibody
Control: Used PBS instead of primary antibody
Second Ab: 2 μ g/ml HRP-Linked



DAB staining on IHC-P;
Sample: Human Spleen Tissue
Primary Ab: 20 μ g/ml Mouse Anti-Human IL18 Antibody
Control: Used PBS instead of primary antibody
Second Ab: 2 μ g/ml HRP-Linked

Caprine Anti-Mouse IgG Polyclonal
Antibody
(Catalog: SAA544Mu19)

Caprine Anti-Mouse IgG Polyclonal
Antibody
(Catalog: SAA544Mu19)

[IMPORTANT NOTE]

The kit is designed for research use only, we will not be responsible for any issue if the kit was used in clinical diagnostic or any other procedures.