

**MAA080Ga22****Monoclonal Antibody to Interleukin 8 (IL8)****Organism Species: Chicken (Gallus)*****Instruction manual***

FOR IN VITRO USE AND RESEARCH USE ONLY

NOT FOR USE IN CLINICAL DIAGNOSTIC PROCEDURES

11th Edition (Revised in May, 2016)

**[ PROPERTIES ]****Source:** Monoclonal antibody preparation**Host:** Mouse**Antibody isotype:** IgG1 Kappa**Purification:** Protein A/G Affinity Chromatography.**Clone number:** 3-2#**Traits:** Liquid**Concentration:** 500µg/mL**UOM:** 200µg**Applications:** WB; ICC; IHC-P; IHC-F; ELISA; IP; IF; FCM.**[ IMMUNOGEN ]****Immunogen:** RPA080Ga01-Recombinant Interleukin 8 (IL8)**[ APPLICATIONS ]**

Western blotting: 0.5-5ug/ml

Immunocytochemistry in formalin fixed cells: 5-30ug/ml

Immunohistochemistry in formalin fixed frozen section: 5-30ug/ml

Immunohistochemistry in paraffin section: 5-30ug/ml

Enzyme-linked Immunosorbent Assay: 0.05-2ug/ml

Optimal working dilutions must be determined by end user.

**[ FORMULATION ]****Form & Buffer:** Supplied as solution form in PBS, pH7.4, containing 0.02% NaN<sub>3</sub>, 50% glycerol.

## [ QUALITY CONTROL ]

**Content:** The quality control contains recombinant IL8 disposed in loading buffer.

**Usage:** 10uL per well when 3,3'-Diaminobenzidine (DAB) as the substrate.  
5uL per well when used in enhanced chemiluminescent (ECL).

**Note:** The quality control is specifically manufactured as the positive control.  
Not used for other purposes.

**Loading Buffer:** 100mM Tris(pH6.8), 1% SDS, 150mM NaCl, 50% glycerol, 0.02% BPB, 50mM DTT and 0.02% NaN<sub>3</sub>.

## [ STORAGE AND STABILITY ]

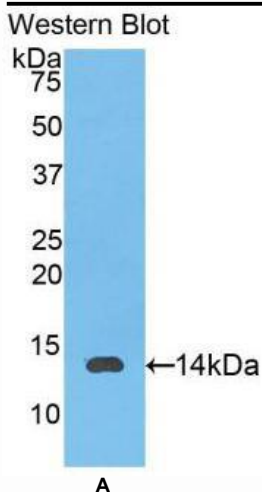
**Storage:** Avoid repeated freeze/thaw cycles.

Store at 4°C for frequent use.

Aliquot and store at -20°C for 12 months.

**Stability Test:** The thermal stability is described by the loss rate. The loss rate was determined by accelerated thermal degradation test, that is, incubate the protein at 37°C for 48h, and no obvious degradation and precipitation were observed. The loss rate is less than 5% within the expiration date under appropriate storage condition.

## [ IDENTIFICATION ]



**Figure 1. Western Blot**

A. Sample: Recombinant IL8, Gallus