

MAD744Hu21

Monoclonal Antibody to Lipolysis Stimulated Lipoprotein Receptor (LSR)

Organism Species: Homo sapiens (Human)

Instruction manual

FOR IN VITRO USE AND RESEARCH USE ONLY
NOT FOR USE IN CLINICAL DIAGNOSTIC PROCEDURES

9th Edition (Revised in Jul, 2013)

[**PRODUCT INFORMATION**]

Immunogen: LSR, Human

Clonality: Monoclonal

Host: Mouse

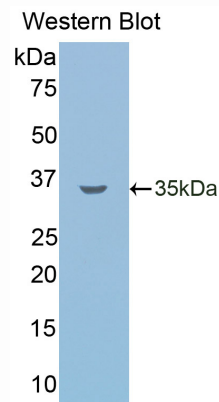
Immunoglobulin Type: IgG

Purification: Affinity Chromatography.

Applications: WB, ICC, IHC-P, IHC-F, ELISA

Concentration: 500µg/mL

UOM: 200µg



Sample: Recombinant LSR, Human

[**IMMUNOGEN INFORMATION**]

Immunogen: Recombinant LSR (Met1~Asp259) expressed in *E. coli*.

USCN Accession No.: RPD744Hu01

Sequence: The target protein is fused with two N-terminal Tags, His-tag and S-tag and its sequence is listed below.

MHHHHHHSSG LVPRGSGMKE TAAAKFERQH MDSPDLGTDD DDKAMADIGS EF-
MQQDGLGVGT RNSGSGKGRSV HPSWPWCAPR PLRYFGRDAR ARRAQTAAMA
LLAGLSRGL GSHPAAGR DAVFVWLLS TWCTAPARAI QVTVSNPYHV VILFQPVTLP
CTYQMTSTPT QPIVIWKYKS FCRDRIADAF SPASVDNQLN AQLAAGNPGY NPYVEQCDSV
RTVRVWTKQ GNAVTLGDYY QGRRITITGN ADLTFDQTAW GDSGVVYCSV VSAQDLQGNN
EAYAEIVLG RTSGVAELLP GFQAGPIED

[ANTIBODY SPECIFICITY]

The antibody is a mouse monoclonal antibody raised against LSR. It has been selected for its ability to recognize LSR in immunohistochemical staining and western blotting.

[APPLICATIONS]

Western blotting: 1:100-400

Immunocytochemistry in formalin fixed cells: 1:100-500

Immunohistochemistry in formalin fixed frozen section: 1:100-500

Immunohistochemistry in paraffin section: 1:50-200

Enzyme-linked Immunosorbent Assay: 1:100-200

Optimal working dilutions must be determined by end user.

[CONTENTS]

Form & Buffer: Supplied as solution form in PBS, pH7.4, containing 0.02% NaN₃, 50% glycerol.

[STORAGE]

Store at 4°C for frequent use. Stored at -20°C to -80°C in a manual defrost freezer for one year without detectable loss of activity. Avoid repeated freeze-thaw cycles.