

MAA165Ra21

Monoclonal Antibody to Pepsinogen A (PGA)

Organism Species: Rattus norvegicus (Rat)

Instruction manual

FOR IN VITRO USE AND RESEARCH USE ONLY
NOT FOR USE IN CLINICAL DIAGNOSTIC PROCEDURES

[PRODUCT INFORMATION]

Immunogen: PGA, Rat

Clonality: Monoclonal

Clone number: F6

Host: Mouse

Immunoglobulin Type: IgG

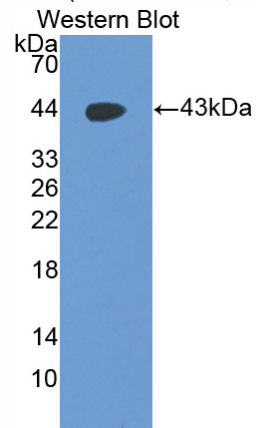
Purification: Affinity Chromatography.

Applications: WB, ICC, IHC-P, IHC-F, ELISA

Concentration: 500µg/mL

UOM: 200µg

9th Edition (Revised in Jul, 2013)



Sample: Recombinant PGA, Rat

[IMMUNOGEN INFORMATION]

Immunogen: Recombinant PGA (Leu16~Ala387) expressed in *E.coli*.

Accession No.: RPA165Ra01

Sequence: The target protein is fused with N-terminal His-Tag and its sequence is listed below.

MGHHHHHSGSEF-LVKIP LMKIKSMREN LRESHMLKDY LEKYPRSAH VLLEQRRNPS
VTYEPMRNYL DLVYIGTISI GTPPQEFKVV LDTGSSDLWV PSYICSSPAC AHHKVFNPLQ
SSTFLVSGRP VNVAYGSGEM SGFLAYDTVK IGDLTVVAQA FGLSLEEPGR FMEHAVFDGI
LGLGYPNLGL QGVTPVFDNL WIQGLIPQNL FAFYLSSKDE KGSVLMGGV DPSYYHGELH
WVPVSKPSYW QLAVDSISMN GEIACDGGC QGIMDTGTSL VTGPRSSILN IQNLIGAKAS
GDGEYFLKCD TINTLPDIVF TIDSVTYPVP ASAYIRKDHS HNCRSNFEEES TDDPSDPELW
VLGDVFLRLY FTVFDRANNR IGLASAA

[ANTIBODY SPECIFICITY]

The antibody is a mouse monoclonal antibody raised against PGA. It has been selected for its ability to recognize PGA in immunohistochemical staining and western blotting.

[APPLICATIONS]

Western blotting: 1:100-400

Immunocytochemistry in formalin fixed cells: 1:100-500

Immunohistochemistry in formalin fixed frozen section: 1:100-500

Immunohistochemistry in paraffin section: 1:50-200

Enzyme-linked Immunosorbent Assay: 1:100-200

Optimal working dilutions must be determined by end user.

[CONTENTS]

Form & Buffer: Supplied as solution form in PBS, pH7.4, containing 0.02% NaN₃, 50% glycerol.

[STORAGE]

Store at 4°C for frequent use. Stored at -20°C to -80°C in a manual defrost freezer for one year without detectable loss of activity. Avoid repeated freeze-thaw cycles.