

MAA532Hu22

Monoclonal Antibody to Plasminogen Activator Inhibitor 1 (PAI1)

Organism Species: *Homo sapiens (Human)*

Instruction manual

FOR RESEARCH USE ONLY

NOT FOR USE IN CLINICAL DIAGNOSTIC PROCEDURES

13th Edition (Revised in Aug, 2023)

[PROPERTIES]

Source: Monoclonal antibody preparation

Host: Mouse

Antibody isotype: IgG1 Kappa

Purification: Protein A + Protein G affinity chromatography

Clone number: J11

Traits: Liquid

Concentration: 0.84mg/mL

UOM: 50µL

Cross Reactivity: N/A

Applications: WB; IHC; ICC/IF

[IMMUNOGEN]

Immunogen: Recombinant PAI1 (Val24~Pro402) expressed in *E.coli*

Accession No.: RPA532Hu02

[APPLICATIONS]

Western blotting: 0.01-2µg/mL;

Immunohistochemistry: 5-20µg/mL;

Immunocytochemistry: 5-20µg/mL;

Flow cytometry: 10µg/ml;

Optimal working dilutions must be determined by end user.

[FORMULATION]

Form & Buffer: Supplied as solution form in PBS, pH7.4, containing 0.02% NaN₃, 50% glycerol.

[STORAGE AND STABILITY]

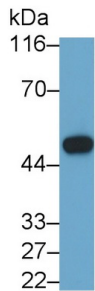
Storage: Avoid repeated freeze/thaw cycles.

Store at 4°C for frequent use.

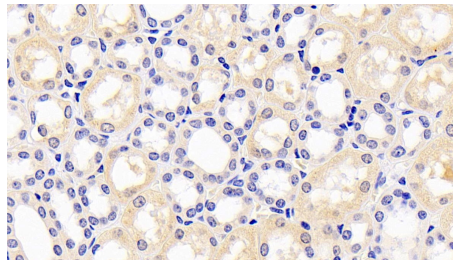
Aliquot and store at -20°C for 24 months.

Stability Test: The thermal stability is described by the loss rate. The loss rate was determined by accelerated thermal degradation test, that is, incubate the protein at 37°C for 48h, and no obvious degradation and precipitation were observed. The loss rate is less than 5% within the expiration date under appropriate storage condition.

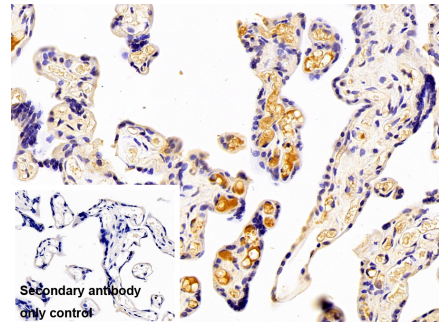
[IDENTIFICATION]



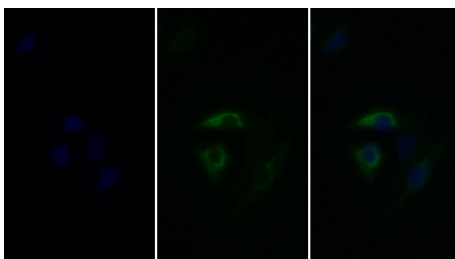
Western Blot; Sample: HepG2 cell lysate Primary Ab: 0.4µg/ml Mouse Anti-Human PAI1 Antibody Second Ab: 0.2µg/mL HRP-Linked Caprine Anti-Mouse IgG Polyclonal Antibody (Catalog: SAA544Mu19)



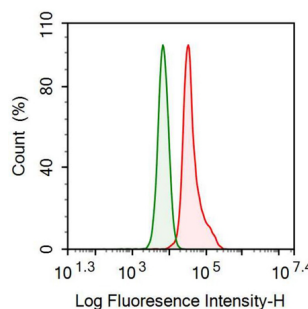
DAB staining on IHC-P; Samples: Human Kidney Tissue; Primary Ab: 20?g/ml Mouse Anti-Human PAI1 Antibody Second Ab: 2µg/mL HRP-Linked Caprine Anti-Mouse IgG Polyclonal Antibody (Catalog: SAA544Mu19)



DAB staining on IHC-P; Sample: Human Placenta Tissue Primary Ab: 30µg/ml Mouse Anti-Human PAI1 Antibody Control: Used PBS instead of primary antibody Second Ab: 2?g/ml HRP-Linked Caprine Anti-Mouse IgG Polyclonal Antibody (Catalog: SAA544Mu19)



FITC staining on IF; Sample: Human Hela cell; Primary Ab: 20ug/ml Mouse Anti-Human PAI1 Antibody Second Ab: 5?g/ml FITC-Linked Caprine Anti-Mouse IgG Polyclonal



Human HepG2 cell line was stained with 10µg/ml mouse Anti-human PAI1 Monoclonal Antibody (Catalog MAA532Hu22, red histogram) or Isotype control antibody (Catalog

Antibody
(Catalog: SAA544Mu18)

IS067-Mu01, green histogram),
followed by 1µg/ml FITC-conjugated
Anti-mouse IgG Secondary Antibody
(Catalog SAA544Mu18).

[IMPORTANT NOTE]

The kit is designed for research use only, we will not be responsible for any issue if the kit was used in clinical diagnostic or any other procedures.