

MAC022Ge21

Monoclonal Antibody to Reverse Triiodothyronine (rT3)

Organism Species: *Pan-species (General)*

Instruction manual

FOR RESEARCH USE ONLY

NOT FOR USE IN CLINICAL DIAGNOSTIC PROCEDURES

13th Edition (Revised in Aug, 2023)

[PROPERTIES]

Source: Monoclonal antibody preparation

Host: Mouse

Antibody isotype: IgG2b Kappa

Purification: Protein A + Protein G affinity chromatography

Clone number: C4

Traits: Liquid

Concentration: 1mg/mL

UOM: 1mL

Cross Reactivity: Human

Applications: ELISA, CLIA. / IHC-Fr, ICC, IP (predicted).

[IMMUNOGEN]

Immunogen: Small Molecule, rT3 conjugated to OVA.

Accession No.: CPC022Ge21

[APPLICATIONS]

Immunohistochemistry: 5-20µg/mL;

Immunocytochemistry: 5-20µg/mL;

Optimal working dilutions must be determined by end user

[FORMULATION]

Form & Buffer: Supplied as solution form in 0.01M PBS, pH7.4, containing 0.05% Proclin-300, 50% glycerol.

[STORAGE AND STABILITY]

Storage: Avoid repeated freeze/thaw cycles.

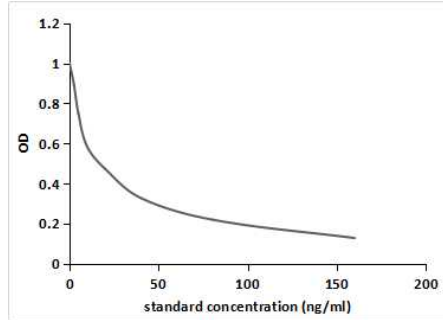
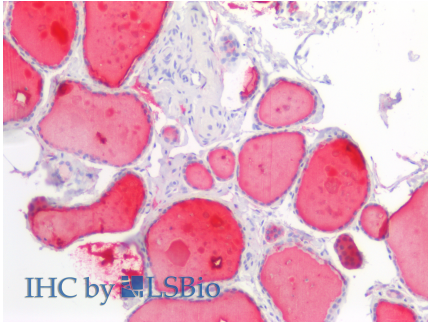
Store at 4°C for frequent use.

Aliquot and store at -20°C for 24 months.

Stability Test: The thermal stability is described by the loss rate. The loss rate was determined by accelerated thermal degradation test, that is, incubate the protein at 37°C for 48h, and no

obvious degradation and precipitation were observed. The loss rate is less than 5% within the expiration date under appropriate storage condition.

[IDENTIFICATION]



Vector Red staining on IHC-P;
Samples: Human Thyroid Tissue;
Primary Ab: 10µg/ml Mouse Anti-Human rT3 Antibody
Second Ab: 2µg/mL HRP-Linked Caprine Anti-Mouse IgG Monoclonal Antibody

Competitive inhibition ELISA;
Coated protein: rT3 conjugated to OVA
(Catalog:CPB963Ge21);
Standard:Series Diluted rT3;
Primary Ab: 0.25µg/ml Mouse Anti rT3 Antibody;
Second Ab: 2µg/mL HRP-Linked Caprine Anti-mouse IgG PolyclonalAntibody
(Catalog: SAA544Rb19)
IC50=10ng/ml

[IMPORTANT NOTE]

The kit is designed for research use only, we will not be responsible for any issue if the kit was used in clinical diagnostic or any other procedures.