

MAD198Hu22

Monoclonal Antibody to Sequestosome 1 (SQSTM1)

Organism Species: *Homo sapiens (Human)*

Instruction manual

FOR RESEARCH USE ONLY

NOT FOR USE IN CLINICAL DIAGNOSTIC PROCEDURES

12th Edition (Revised in Aug, 2016)

[PROPERTIES]

Source: Monoclonal antibody preparation

Host: Mouse

Antibody isotype: IgG1 Kappa

Purification: Protein A + Protein G affinity chromatography

Clone number: C1

Traits: Liquid

Concentration: 1mg/ml

UOM: 1ml*2

Cross Reactivity: N/A

Applications: WB; IF

[IMMUNOGEN]

Immunogen: Recombinant SQSTM1 (Val136~Gln400) expressed in *E.coli*

Accession No.: RPD198Hu01

[APPLICATIONS]

Western blotting: 0.2-2µg/mL

Immunofluorescence: 2-20µg/mL

Optimal working dilutions must be determined by end user.

[FORMULATION]

Form & Buffer: Supplied as solution form in 0.01M PBS, pH7.4, containing 0.05% Proclin-300, 50% glycerol.

[STORAGE AND STABILITY]

Storage: Avoid repeated freeze/thaw cycles.

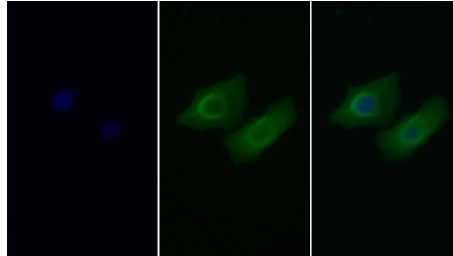
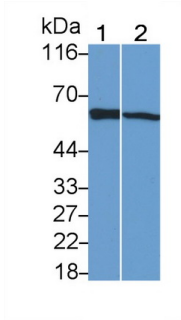
Store at 4°C for frequent use.

Aliquot and store at -20°C for 24 months.

Stability Test: The thermal stability is described by the loss rate. The loss rate was determined by accelerated thermal degradation test, that is, incubate the protein at 37°C for 48h, and no

obvious degradation and precipitation were observed. The loss rate is less than 5% within the expiration date under appropriate storage condition.

[IDENTIFICATION]



FITC staining on IF; Sample: Human

<p>Western Blot; Sample: Lane1: HeLa cell lysate; Lane2: Human Placenta lysate Primary Ab: 0.2µg/ml Mouse Anti-Human SQSTM1 Antibody Second Ab: 0.2µg/mL HRP-Linked Caprine Anti-Mouse IgG Polyclonal Antibody (Catalog: SAA544Mu19)</p>	<p>HeLa cell; Primary Ab: 20?g/ml Mouse Anti-Human SQSTM1 Antibody Second Ab: 5?g/ml FITC-Linked Caprine Anti-Mouse IgG Polyclonal Antibody (Catalog: SAA544Mu18)</p>
--	--

[IMPORTANT NOTE]

The kit is designed for research use only, we will not be responsible for any issue if the kit was used in clinical diagnostic or any other procedures.