

MAB039Hu22

Monoclonal Antibody to Surfactant Associated Protein D (SPD)

Organism Species: Homo sapiens (Human)

Instruction manual

FOR IN VITRO USE AND RESEARCH USE ONLY
NOT FOR USE IN CLINICAL DIAGNOSTIC PROCEDURES

9th Edition (Revised in Jul, 2013)

[PRODUCT INFORMATION]

Immunogen: SPD, Human

Clonality: Monoclonal

Clone number: H1

Host: Mouse

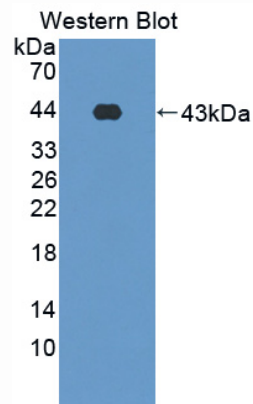
Immunoglobulin Type: IgG1

Purification: Affinity Chromatography.

Applications: WB, ICC, IHC-P, IHC-F, ELISA

Concentration: 500µg/mL

UOM: 100µg



Sample: Recombinant SPD, Human

[IMMUNOGEN INFORMATION]

Immunogen: Recombinant SPD (Ala21~Phe375) expressed in *E.coli*.

Accession No.: RPB039Hu01

Sequence: The target protein is fused with N-terminal His-Tag and its sequence is listed below.

MGHHHHHHSQSEF- AEMKTYSHRT MPSACTLVMC SSVESGLPGR DGRDREGPR
GEKGDPLPG AAGQAGMPGQ AGPVGPKGDN GSVGEPGPKG DTGPGPPGP
PGVPGPAGRE GPLGKQGNIG PQGKPGPKGE AGPKGEVGAP GMQGSAGARG
LAGPKGERGV PGERGVPGNT GAAGSAGAMG PQGSPGARGP PGLKGDGKIP
GDKGAKGESG LPDVASLRQQ VEALQGQVQH LQAAFSQYKK VELFPNGQSV
GEKIFKTAGF VKPFTEAQLL CTQAGGQLAS PRSAAENAAL QQLVAKNEA AFLSMTDSKT
EGKFTYPTGE SLVYSNWAPG EPNDDGGSSED CVEIFTNGKW NDRACGEKRL VVCEF

[ANTIBODY SPECIFICITY]

The antibody is a mouse monoclonal antibody raised against SPD. It has been selected for its ability to recognize SPD in immunohistochemical staining and western blotting.

[APPLICATIONS]

Western blotting: 1:100-400

Immunocytochemistry in formalin fixed cells: 1:100-500

Immunohistochemistry in formalin fixed frozen section: 1:100-500

Immunohistochemistry in paraffin section: 1:50-200

Enzyme-linked Immunosorbent Assay: 1:100-200

Optimal working dilutions must be determined by end user.

[CONTENTS]

Form & Buffer: Supplied as solution form in PBS, pH7.4, containing 0.02% NaN₃, 50% glycerol.

[STORAGE]

Store at 4°C for frequent use. Stored at -20°C to -80°C in a manual defrost freezer for one year without detectable loss of activity. Avoid repeated freeze-thaw cycles.