



**NPB028Gu01 100µg**  
**Native Albumin (ALB)**  
**Organism Species: *Cavia (Guinea pig)***  
***Instruction manual***

FOR RESEARCH USE ONLY  
NOT FOR USE IN CLINICAL DIAGNOSTIC PROCEDURES

---

---

12th Edition (Revised in Aug, 2016)

## **[ PROPERTIES ]**

**Source:** Natural Extract

**Host:** Cavia (Serum)

**Tissue Specificity:** Serum.

**Subcellular Location:** Secreted.

**Purity:** >95% as determined by SDS-PAGE.

**Purification Methods:** Salt co-precipitation and ionic-Exchange chromatography.

**Traits:** Freeze-dried powder

**Buffer Formulation:** PBS, pH7.4, containing 0.01% SKL, 5% Trehalose.

**Original Concentration:** 800µg/mL

**Applications:** Positive Control; Immunogen; SDS-PAGE; WB.

(May be suitable for use in other assays to be determined by the end user.)

**Accurate Molecular Mass:** 70kDa

**Observe Molecular Mass:** 70kDa

## **[ USAGE ]**

Reconstitute in PBS (PH7.4) to a concentration of 0.1-1.0 mg/mL. Do not vortex.

## **[ STORAGE AND STABILITY ]**

**Storage:** Avoid repeated freeze/thaw cycles.

Store at 2-8°C for one month.

Aliquot and store at -80°C for 12 months.

**Stability Test:** The thermal stability is described by the loss rate. The loss rate was determined by accelerated thermal degradation test, that is, incubate the protein at 37°C for 48h, and no obvious degradation and precipitation were observed. The loss rate is less than 5% within the expiration date under appropriate storage condition.

[ **IDENTIFICATION** ]

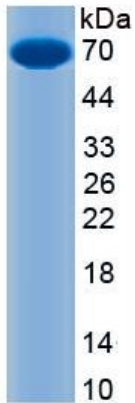


Figure 1. SDS-PAGE

[ **IMPORTANT NOTE** ]

The kit is designed for research use only, we will not be responsible for any issue if the kit was used in clinical diagnostic or any other procedures.