



**NPA821Hu02 100µg**  
**Native C Reactive Protein (CRP)**  
**Organism Species: *Homo sapiens* (Human)**  
***Instruction manual***

FOR IN VITRO USE AND RESEARCH USE ONLY  
NOT FOR USE IN CLINICAL DIAGNOSTIC PROCEDURES

---

---

12th Edition (Revised in Aug, 2016)

## **[ PROPERTIES ]**

**Source:** Natural Extract

**Host:** Human (Plasma)

**Tissue Specificity:** Plasma.

**Purity:** >98% as determined by SDS-PAGE.

**Purification Methods:** Salt co-precipitation and ionic-Exchange chromatography.

**Traits:** Freeze-dried powder

**Buffer Formulation:** PBS, pH7.4.

**Original Concentration:** 200µg/mL

**Applications:** Positive Control; Immunogen; SDS-PAGE; WB.

(May be suitable for use in other assays to be determined by the end user.)

**Predicted isoelectric point:** 5.5

**Accurate Molecular Mass:** 25.0kDa

**Observe Molecular Mass:** 25kDa

## **[ USAGE ]**

Reconstitute in PBS (PH7.4) to a concentration of 0.1-1.0 mg/mL. Do not vortex.

## **[ STORAGE AND STABILITY ]**

**Storage:** Avoid repeated freeze/thaw cycles.

Store at 2-8°C for one month.

Aliquot and store at -80°C for 12 months.

**Stability Test:** The thermal stability is described by the loss rate. The loss rate was determined by accelerated thermal degradation test, that is, incubate the protein at 37°C for 48h, and no obvious degradation and precipitation were observed. The loss rate is less than 5% within the expiration date under appropriate storage condition.

**[ IDENTIFICATION ]**

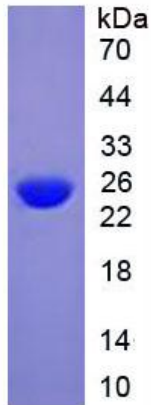


Figure 1. SDS-PAGE

**[ IMPORTANT NOTE ]**

The kit is designed for in vitro and research use only, we will not be responsible for any issue if the kit was used in clinical diagnostic or any other procedures.