



NPA545Mu01 200µg
Native Immunoglobulin E (IgE)
Organism Species: Mus musculus (Mouse)
Instruction manual

FOR IN VITRO USE AND RESEARCH USE ONLY
NOT FOR USE IN CLINICAL DIAGNOSTIC PROCEDURES

12th Edition (Revised in Aug, 2016)

[PROPERTIES]

Source: Natural Extract

Host: Mouse (Serum)

Tissue Specificity: Serum.

Purity: >90% as determined by SDS-PAGE.

Purification Methods: Salt co-precipitation and ionic-Exchange chromatography.

Traits: Freeze-dried powder

Buffer Formulation: 20mM Tris, 150mM NaCl, pH8.0, containing 5%Trehalose.

Original Concentration: 200ug/mL

Applications: SDS-PAGE; WB; ELISA; IP; CoIP; EMSA; Purification; Activity Assays; Amine Reactive Labeling.

(May be suitable for use in other assays to be determined by the end user.)

Accurate Molecular Mass: 27&55kDa

Observe Molecular Mass: 27&55kDa

[USAGE]

Reconstitute in 20mM Tris, 150mM NaCl (pH8.0) to a concentration of 0.1-1.0 mg/mL. Do not vortex.

[STORAGE AND STABILITY]

Storage: Avoid repeated freeze/thaw cycles.

Store at 2-8°C for one month.

Aliquot and store at -80°C for 12 months.

Stability Test: The thermal stability is described by the loss rate. The loss rate was determined by accelerated thermal degradation test, that is, incubate the protein at 37°C for 48h, and no obvious degradation and precipitation were observed. The loss rate is less than 5% within the expiration date under appropriate storage condition.

[**IDENTIFICATION**]

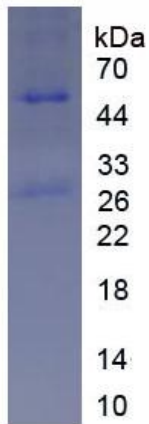


Figure. SDS-PAGE