

**PAD664Hu01**

**Polyclonal Antibody to Acetyl Coenzyme A Acetyltransferase 1 (ACAT1)**

**Organism Species: *Homo sapiens (Human)***

***Instruction manual***

FOR RESEARCH USE ONLY

NOT FOR USE IN CLINICAL DIAGNOSTIC PROCEDURES

---

13th Edition (Revised in Aug, 2023)

### **[ PROPERTIES ]**

**Source:** Polyclonal antibody preparation

**Host:** Rabbit

**Purification:** Antigen-specific affinity chromatography followed by Protein A affinity chromatography

**Traits:** Liquid

**Concentration:** 0.71mg/ml

**UOM:** 1ml\*2

**Cross Reactivity:** Porcine

**Applications:** IHC; IF

### **[ IMMUNOGEN ]**

**Immunogen:** Recombinant ACAT1 (Ala111~Leu427) expressed in *E.coli*

**Accession No.:** RPD664Hu01

### **[ APPLICATIONS ]**

Immunohistochemistry: 5-20µg/mL;

Immunofluorescence:5-20µg/mL;

Optimal working dilutions must be determined by end user.

### **[ FORMULATION ]**

**Form & Buffer:** Supplied as solution form in PBS, pH7.4, containing 0.02% NaN<sub>3</sub>, 50% glycerol.

### **[ STORAGE AND STABILITY ]**

**Storage:** Avoid repeated freeze/thaw cycles.

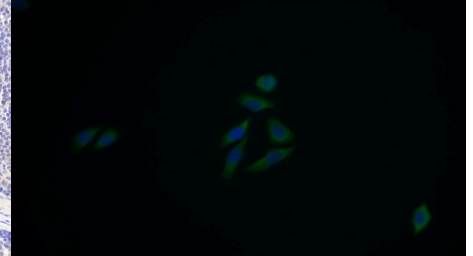
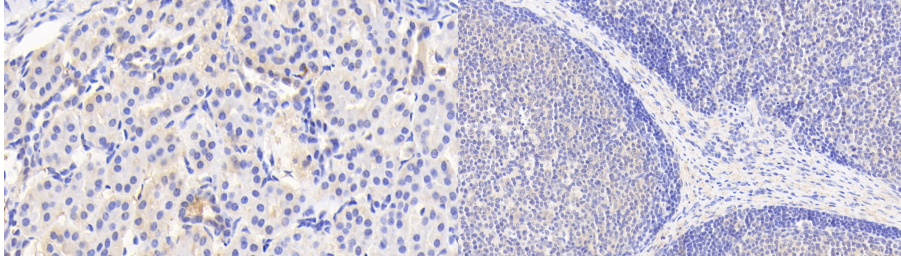
Store at 4°C for frequent use.

Aliquot and store at -20°C for 24 months.

**Stability Test:** The thermal stability is described by the loss rate. The loss rate was determined by accelerated thermal degradation test, that is, incubate the protein at 37°C for 48h, and no obvious degradation and precipitation were observed. The loss rate is less than 5% within the

expiration date under appropriate storage condition.

**[ IDENTIFICATION ]**



DAB staining on IHC-P; Samples:  
Human Kidney Tissue; Primary Ab:  
20?g/ml Rabbit Anti-Human ACAT1  
Antibody Second Ab: 2µg/mL HRP-  
Linked Caprine Anti-Rabbit IgG  
Polyclonal Antibody (Catalog:  
SAA544Rb19)

DAB staining on IHC-P;  
Samples: Human Lymph node Tissue;  
Primary Ab: 20?g/ml Rabbit Anti-  
Human ACAT1 Antibody  
Second Ab: 2µg/mL HRP-Linked  
Caprine Anti-Rabbit IgG Polyclonal  
Antibody  
(Catalog: SAA544Rb19)

FITC staining on IF;  
Samples: Human HepG2 cell;  
Primary Ab: 20?g/ml Rabbit Anti-  
Human ACAT1 Antibody  
Second Ab: 1.5?g/ml FITC-Linked  
Caprine Anti-Rabbit IgG Polyclonal  
Antibody  
(Catalog: SAA544Rb18)

**[ IMPORTANT NOTE ]**

The kit is designed for research use only, we will not be responsible for any issue if the kit was used in clinical diagnostic or any other procedures.