

pA90002Rb51
Polyclonal Antibody to Activated Leukocyte Cell Adhesion Molecule (ALCAM)
Organism: Oryctolagus cuniculus (Rabbit)
Instruction manual

FOR IN VITRO USE AND RESEARCH USE ONLY
NOT FOR USE IN CLINICAL DIAGNOSTIC PROCEDURES

7th Edition (Revised in May, 2013)

[PRODUCT INFORMATION]

Immunogen: ALCAM, Rabbit

Clonality: Polyclonal

Host: Cavia

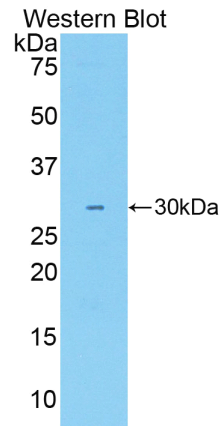
Immunoglobulin Type: IgG

Purification: Affinity Chromatography.

Applications: WB, ICC, IHC-P, IHC-F, ELISA

Concentration: 200µg/mL

UOM: 100µg



Sample: Recombinant ALCAM, Rabbit




[IMMUNOGEN INFORMATION]

Immunogen: Recombinant ALCAM (Gly225~Ala478) expressed in *E. coli*.

USCN Accession No.: rP90002Rb01

Sequence: The target protein is fused with N-terminal His-Tag and its sequence is listed below.

MGHHHHHSGSEF-GQPEGI RSSNTYTLPN VRRNATGNYK CSLIDKSLI ASTAITVHYL
DLSLNPXGEL TKQIGDSLVP SCTISAIRNA TVVWMKDNK LRSSPSFSSL QYQDAGNYVC
ETALQEVEGL KKRESLTLIV EVKPQIKMTK KDPSGLSKT IICHVEGFPK PAIQWITIGS
GSVINQTEES PYINGRYYSK IIISPEENVLT LCAEAENQLE RTVNSLNVSA ISIPEHDEAD
EISDENREKV NDQAKLIVGI VVGLLLAA

Unique product Superb quality Client favorite Nicest service  ISO9001:2008 ;  ISO13485:2003 ; 

[ANTIBODY SPECIFICITY]

The antibody is a cavia polyclonal antibody raised against ALCAM. It has been selected for its ability to recognize ALCAM in immunohistochemical staining and western blotting.

[APPLICATIONS]

Western blotting: 1:100-400

Immunocytochemistry in formalin fixed cells: 1:100-500

Immunohistochemistry in formalin fixed frozen section: 1:100-500

Immunohistochemistry in paraffin section: 1:50-200

Enzyme-linked Immunosorbent Assay: 1:100-200

Optimal working dilutions must be determined by end user.

[CONTENTS]

Form & Buffer: Supplied as solution form in PBS, pH7.4, containing 0.02% NaN₃, 50% glycerol.

[QUALITY CONTROL]

Content: The quality control contains recombinant ALCAM (Gly225~Ala478) disposed in loading buffer.

Usage: 10uL per well when 3,3'-Diaminobenzidine(DAB) as the substrate.

5uL per well when used in enhanced chemiluminescent (ECL).

Note: The quality control is specifically manufactured as the positive control. Not used for other purposes.

Loading Buffer: 100mM Tris(pH8.8), 2% SDS, 200mM NaCl, 50% glycerol, BPB 0.01%, NaN₃ 0.02%.

[STORAGE]

Store at 4°C for frequent use. Stored at -20°C to -80°C in a manual defrost freezer for one year without detectable loss of activity. Avoid repeated freeze-thaw cycles.

Unique product Superb quality Client favorite Nicest service  ISO9001:2008 ;  ISO13485:2003 ; 